

# MicroSurvey® STAR\*NET 9.2

## Features and Benefits

---

MicroSurvey STAR\*NET v9.2 is a maintenance release that provides new enhancements, features, and fixes across all product levels.

STAR\*NET 9.2 adds over 125 new coordinate systems, a LandXML exporter, adjustment of both Face I/II observations in most common 3D conventional record types, a new plan rotation inline, improved help and hover tips, display of Combined Scale Factor and Convergence Angle values within Network Plot tools, and more. It's easier than ever to use STAR\*NET to deliver the reputable accuracy and reliable performance that its discerning users have come to expect.

## Contents

|   |   |
|---|---|
| MicroSurvey STAR*NET 9.2.....               | 2 |
| New: MicroSurvey Launch Analytics .....     | 2 |
| New: LandXML Export .....                   | 2 |
| New: .ROTATION Inline .....                 | 3 |
| Enhanced: Coordinate System Engine.....     | 4 |
| Enhanced: Help, Hover, and Error Tips ..... | 5 |
| Enhanced: Network Plot Tools.....           | 6 |
| Enhanced: STAR*JobXML Converter .....       | 7 |
| Enhanced: Workflow.....                     | 8 |

## MicroSurvey STAR\*NET 9.2

Release Date: July 4, 2019

### New: MicroSurvey Launch Analytics

Upgrade Tour Movie: N/A

| Feature                      | Benefit   |
|------------------------------|---|
| MicroSurvey Launch Analytics | MicroSurvey is pleased to announce its STAR*NET Launch Analytics program, which collects anonymous launch data, and transmits it to a secure server. MicroSurvey can then learn how many unique users run STAR*NET each day, and the number of times that it is run. Your personal data is not collected. |

### New: LandXML Export

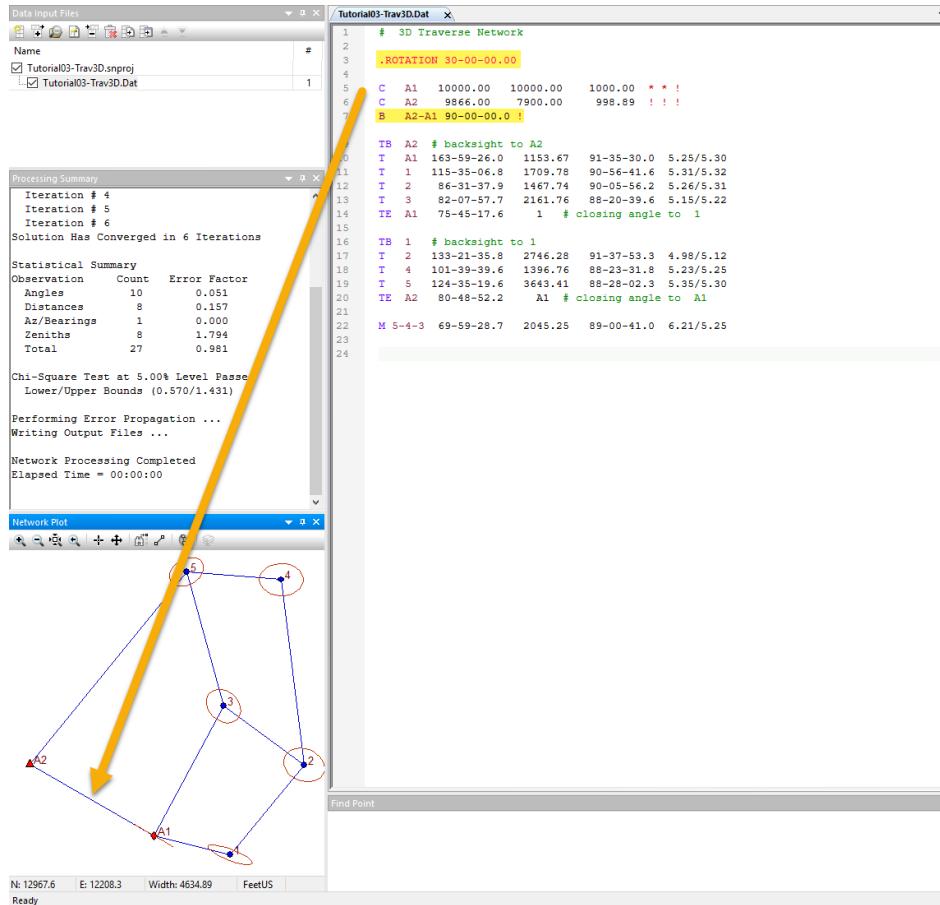
Upgrade Tour Movie: [Click Here](#)

The screenshot shows the 'Export LandXML' dialog box with the following fields and options:

- Project:** Name: Tutorial09-VectorCombined; Description: STAR\*NET Adjusted Coordinates
- Author:** Name: Your Name; Email: your.name@me.com; Company: Your Company,inc; URL: www.company.com
- Output File:** Browse button; Path: C:\Users\Public\Documents\Tutorial09-VectorCombined.xml
- View after export
- Save as company defaults
- Buttons: Export, Cancel, Help

| Feature        | Benefit  |
|----------------|--|
| LandXML Export | You may now export the results of your adjustment to LandXML, for import into your preferred software package. Points are exported in point groups for applicable programs, and network connections are exported as lines. |

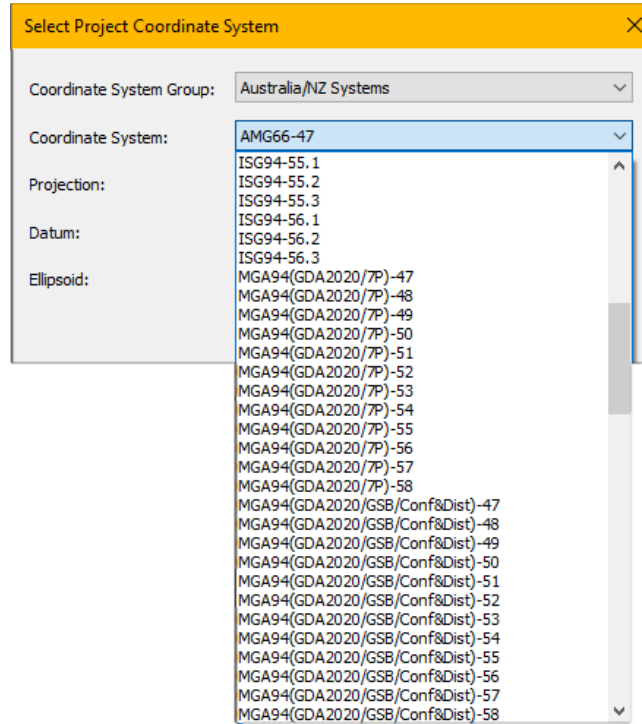
New: **.ROTATION** Inline  
 Upgrade Tour Movie: [Click Here](#)



| Feature                  | Benefit  |
|--------------------------|--|
| .ROTATION Inline Command | A plan rotation may now be applied to all bearings or azimuths in a particular file (not project). All B, BM, and other lines with set bearing/azimuth values are affected by the rotation specified by the syntax ".ROTATION <angle>". Angles are always DMS, and may be specified as "0.123456" or "00-12-34.56". A blank ".ROTATION" line is the same as ".ROTATION 0-00-00". Multiple rotations may be applied per file/project. |

## Enhanced: Coordinate System Engine

Upgrade Tour Movie: [Click Here](#)



| Feature                      | Benefit  |
|------------------------------|--|
| New Coordinate Systems       | The MicroSurvey coordinate system library has been centralized, allowing the inclusion of more than 125 new coordinate systems to STAR*NET 9.2, including Australia/NZ GDA 2020 systems, Namibian and Moroccan systems, Korean and Malaysian systems, several European systems, and US OCRS systems. |
| Improved Details Shown       | Coordinate System Details now shows the name of the current ellipsoid in use.  |
| Improved Custom System Input | Tips have been improved in the custom coordinate system input dialog, and inverse flattening has been made an editable value.  |

## Enhanced: Help, Hover, and Error Tips

Upgrade Tour Movie: [Click Here](#)

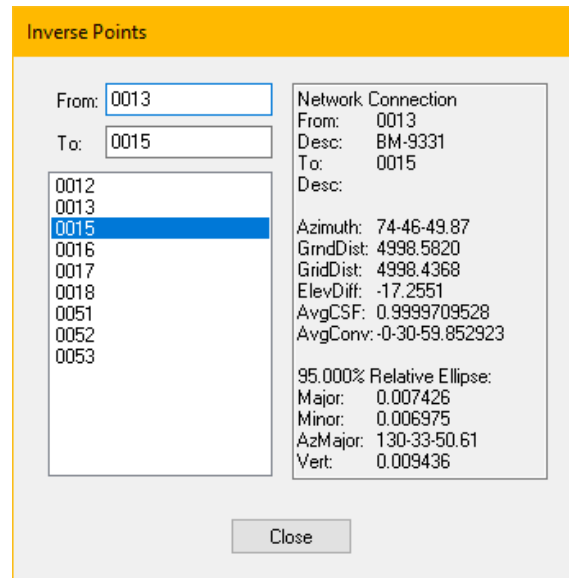
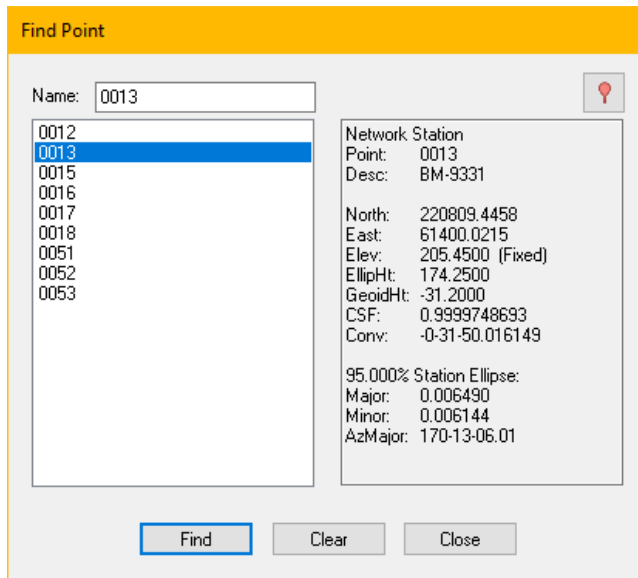
```
T 4 101-39-39.6 1396.76 88-23-
T 5 124-35-19.6 3643.41 88-28-
TE A2 80-48- <Horizontal Angle> lng
M 5-4-3 69-59-28.7 2045.25 89-00-
```

```
T 3 82-07-57.7 2161.76 88-20-39.6 5.15/5.22
TE T <sta> <hzAng> <slpDist> <zAng> [<stdErrHA> <stdErrSD> <stdErrZA>] [<hi>/<ht>] ['<desc>]
```

| Feature    | Benefit  |
|------------|--|
| Hover Tips | Hover tips are now turned on by default, and display the syntax when hovering over individual items in an input string. They have also been improved to show the correct syntax when affected by inline commands.  |
| Help Tips  | The syntax for help tips has been improved, so it no longer clashes with hover tips, and displays the correct information when input is affected by inline commands, such as .DELTA ON. The current parameter (cursor position) is highlighted in red, which has the effect of making it easier to determine the current position within an input line, as well as greatly improving manual entry. |
| Error Tips | Error tips are now cleared when the affected line is edited, until the adjustment is re-run, making it easier to keep track of which errors have been addressed.   |

Enhanced: Network Plot Tools

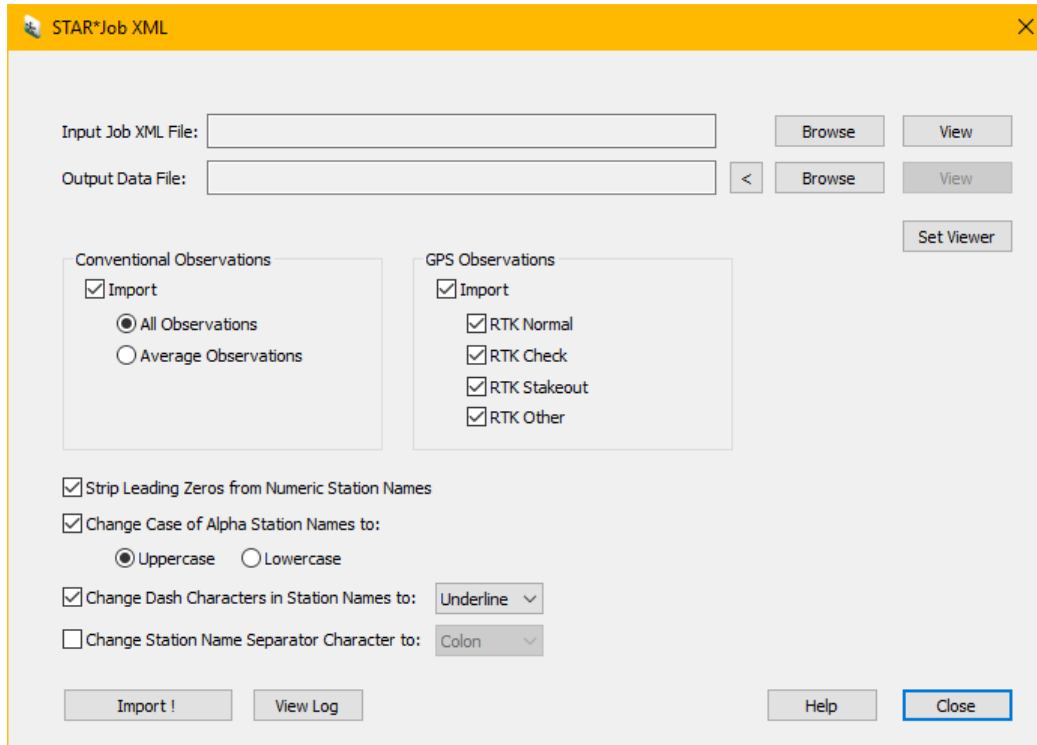
Upgrade Tour Movie: [Click Here](#)



| Feature        | Benefit  |
|----------------|--|
| Find Point     | Combined Scale Factor and Convergence are now displayed in the Find Point dialog when a point is selected.   |
| Inverse Points | Grid and Ground distances, Average Combined Scale Factor, and Average Convergence are now displayed in the Inverse Points dialog when two points are selected. |

Enhanced: STAR\*JobXML Converter

Upgrade Tour Movie: [Click Here](#)



| Feature               | Benefit   |
|-----------------------|---|
| STAR*JobXML Converter | The converter has been improved, more accurately converting JobXML files into direction sets, DV records, and M records. Rounds are put into individual direction sets. |
| AzimuthOnly           | AzimuthOnly records in the JobXML file are now imported as B records in STAR*NET.   |



Enhanced: Workflow

Upgrade Tour Movie: [Click Here](#)

|              |              |          |              |             |
|--------------|--------------|----------|--------------|-------------|
| DB 105       |              |          |              |             |
| DM 104       | 234-24-14.57 | 529.2243 | 89-21-01.46  | 5.623/5.715 |
| DM 106       | 60-55-29.14  | 549.9036 | 90-59-57.06  | 5.623/5.578 |
| DM 104       | 54-24-15.87  | 529.2241 | 270-38-59.81 | 5.623/5.715 |
| DM 106       | 240-55-31.11 | 549.9027 | 269-00-04.76 | 5.623/5.578 |
| DE           |              |          |              |             |
| # DV 105-104 |              | 529.2242 | 89-21-00.83  | 5.623/5.715 |

| Feature               | Benefit  |
|-----------------------|--|
| Face II Normalization | <p>Face II values are now accepted in 3D projects as part of M, T, DM, and SS records. Zenith values are used to determine FI/II, and therefore, a zenith value must exist, and .DELTA ON, 2D, etc. values will be treated as though they are Face I, since there is no way to determine if they are Face II.</p> <p>Face II values are normalized, and adjusted with the rest of the data, then de-normalized in the listing, so the user may see changes to the original values.</p> <p>An asterisk (*) is placed next to Face II horizontal angles in the listing, so the user can better track them in the file.</p> |
| Commenting            | <p>Line commenting has been improved in two ways:</p> <ul style="list-style-type: none"> <li>- Clicking in the left margin to highlight a line, then typing “#” will now comment only the selected line, rather than this line and the line following it.</li> <li>- Double-clicking a File:Line item next to a standardized residual value in the listing, then typing “#” will now comment/uncomment the highlighted line. This allows the user to quickly remove flagged measurements.</li> </ul>   |