



---

# **MicroSurvey embeddedCAD 2020**

## Features and Benefits

4 November 2019

---

# Contents

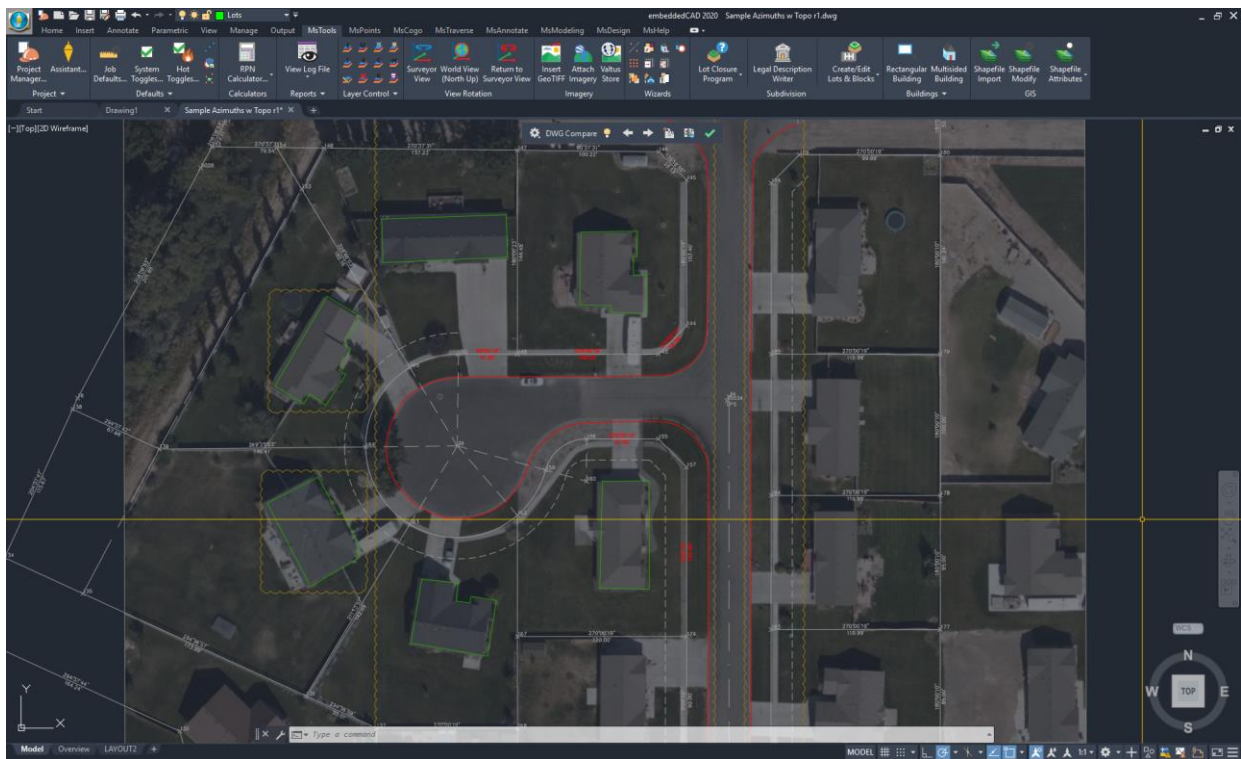
<b>MicroSurvey embeddedCAD 2020 .....</b>	<b>3</b>
New: COMPARE .....	3
New: AutoCAD® OEM 2020 User Interface .....	4
New: PDFSHXTEXT .....	4
Enhanced: Coordinate System Engine .....	5
Fixed: Active Coordinate Editor .....	6
Fixed: AutoMap Library.....	7
Fixed: Active Traverse Editor.....	7
Fixed: ASCII Export .....	7
Fixed: Bearing/Distance Labels .....	7
Fixed: Lot Closure .....	7

# MicroSurvey embeddedCAD 2020

Release Date: October 31, 2019

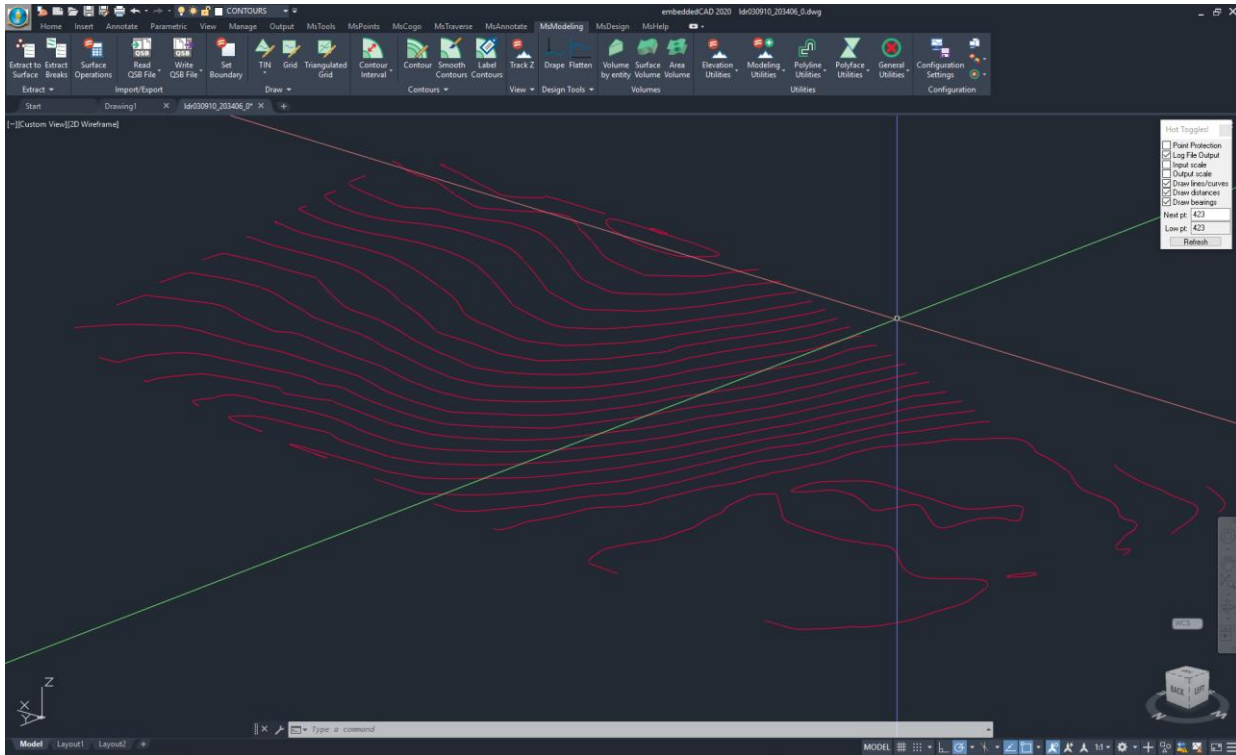
MicroSurvey embeddedCAD is powered by the latest AutoCAD® OEM 2020 engine, providing users with unencumbered survey drafting and calculation workflows, including COGO, point tools for gridline-based projects, traverse input and adjustment, misclosure reporting, common data collector support, 3D surface representation and computation, corridor design, and much more.

## New: COMPARE



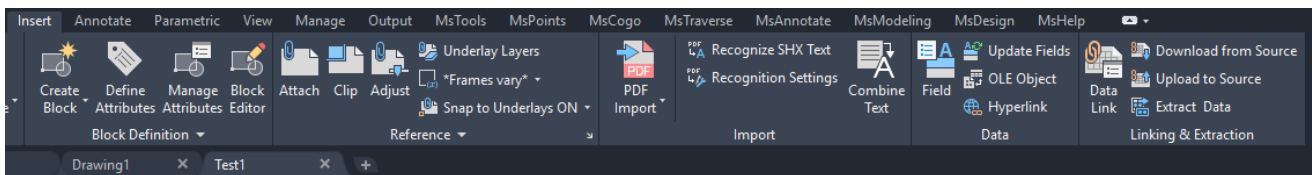
Feature	Benefit
COMPARE	Users may now utilize the AutoCAD® COMPARE command to display differences between two drawings. Objects are colored according to their containing drawing, and are encircled by revision clouds. Users can pan between revision clouds to explore differences.
COMPAREIMPORT	Users may now use COMPAREIMPORT from within the COMPARE command to import objects from compared drawings to the current one. This function will import MicroSurvey database objects, but will remove them from the database
COMPAREEXPORT	Users may now use COMPAREEXPORT from within the COMPARE command to export the comparison results to a separate drawing for later review. This drawing is not automatically created with a database, but it can be created by saving the drawing.

### New: AutoCAD® OEM 2020 User Interface



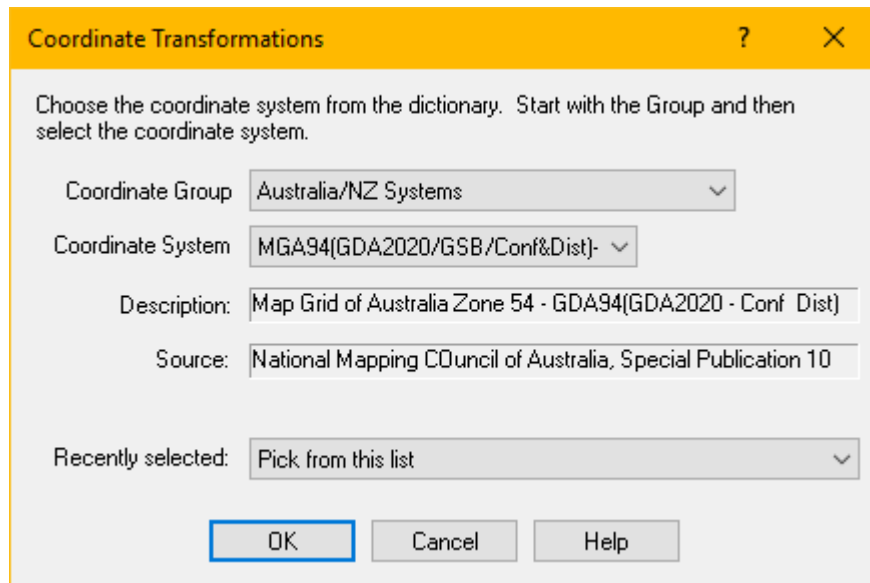
Feature	Benefit
User Interface	The interface has been updated to include a new dark version which is in line with other AutoCAD® 2020 products

### New: PDFSHXTEXT



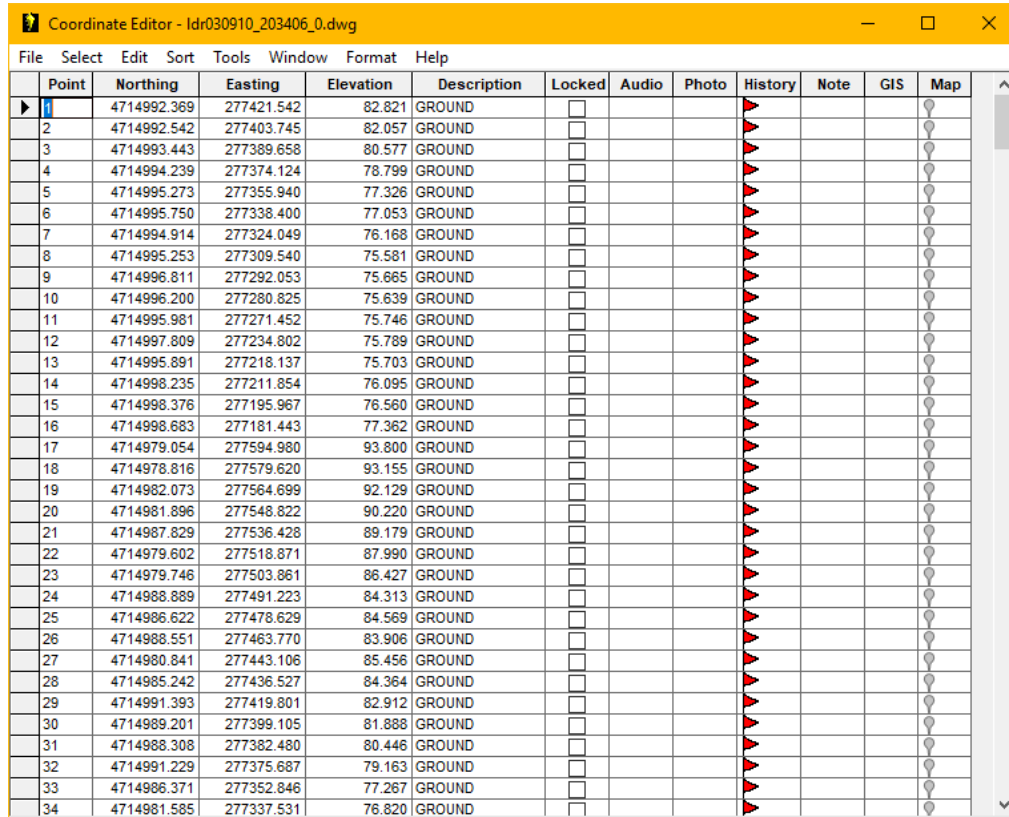
Feature	Benefit
Recognize SHX Text	The AutoCAD® PDFSHXTEXT command has been activated, allowing users to detect SHX text from imported vector PDF files automatically.

Enhanced: Coordinate System Engine



Feature	Benefit
CSMap Coordinate System Engine	The coordinate system engine has been upgraded and now includes over 125 new coordinate systems, which are primarily situated in Africa, Asia, Australasia, Europe, and the USA.

Fixed: Active Coordinate Editor



Point	Northing	Easting	Elevation	Description	Locked	Audio	Photo	History	Note	GIS	Map
1	4714992.369	277421.542	82.821	GROUND	<input type="checkbox"/>						
2	4714992.542	277403.745	82.057	GROUND	<input type="checkbox"/>						
3	4714993.443	277389.658	80.577	GROUND	<input type="checkbox"/>						
4	4714994.239	277374.124	78.799	GROUND	<input type="checkbox"/>						
5	4714995.273	277355.940	77.326	GROUND	<input type="checkbox"/>						
6	4714995.750	277338.400	77.053	GROUND	<input type="checkbox"/>						
7	4714994.914	277324.049	76.168	GROUND	<input type="checkbox"/>						
8	4714995.253	277309.540	75.581	GROUND	<input type="checkbox"/>						
9	4714996.811	277292.053	75.665	GROUND	<input type="checkbox"/>						
10	4714996.200	277280.825	75.639	GROUND	<input type="checkbox"/>						
11	4714995.981	277271.452	75.746	GROUND	<input type="checkbox"/>						
12	4714997.809	277234.802	75.789	GROUND	<input type="checkbox"/>						
13	4714995.891	277218.137	75.703	GROUND	<input type="checkbox"/>						
14	4714998.235	277211.854	76.095	GROUND	<input type="checkbox"/>						
15	4714998.376	277195.967	76.560	GROUND	<input type="checkbox"/>						
16	4714998.683	277181.443	77.362	GROUND	<input type="checkbox"/>						
17	4714979.054	277594.980	93.800	GROUND	<input type="checkbox"/>						
18	4714978.816	277579.620	93.155	GROUND	<input type="checkbox"/>						
19	4714982.073	277564.699	92.129	GROUND	<input type="checkbox"/>						
20	4714981.896	277548.822	90.220	GROUND	<input type="checkbox"/>						
21	4714987.829	277536.428	89.179	GROUND	<input type="checkbox"/>						
22	4714979.602	277518.871	87.990	GROUND	<input type="checkbox"/>						
23	4714979.746	277503.861	86.427	GROUND	<input type="checkbox"/>						
24	4714988.889	277491.223	84.313	GROUND	<input type="checkbox"/>						
25	4714986.622	277478.629	84.569	GROUND	<input type="checkbox"/>						
26	4714988.551	277463.770	83.906	GROUND	<input type="checkbox"/>						
27	4714980.841	277443.106	85.456	GROUND	<input type="checkbox"/>						
28	4714985.242	277436.527	84.364	GROUND	<input type="checkbox"/>						
29	4714991.393	277419.801	82.912	GROUND	<input type="checkbox"/>						
30	4714989.201	277399.105	81.888	GROUND	<input type="checkbox"/>						
31	4714988.308	277382.480	80.446	GROUND	<input type="checkbox"/>						
32	4714991.229	277375.687	79.163	GROUND	<input type="checkbox"/>						
33	4714986.371	277352.846	77.267	GROUND	<input type="checkbox"/>						
34	4714981.585	277337.531	76.820	GROUND	<input type="checkbox"/>						

Feature	Benefit
Change Selection Layer	A bug in the “Change Selection Layer” function has been fixed
Select All	Ctrl+A will now select all points in the Active Coordinate Editor
Codebase Errors	Certain functions, when performed with the Active Coordinate Editor open, could cause codebase errors and crashes.

### Fixed: AutoMap Library

Feature	Benefit
AutoMap Library	Deleting the last code in an AutoMap library could cause a crash
AutoMap Library	Creating a new library would display the wrong image preview until a new code was created.

### Fixed: Active Traverse Editor

Feature	Benefit
Refresh	Clicking the refresh button could cause a string of error messages

### Fixed: ASCII Export

Feature	Benefit
ASCII Export	Certain combinations when exporting an ASCII file could cause an unexpected conversion from feet to meters

### Fixed: Bearing/Distance Labels

Feature	Benefit
Bearing/Distance Labels	An elusive issue which would remove lines from the database and mark the labels with "XX" has been fixed.

### Fixed: Lot Closure

Feature	Benefit
Lot Closure	Deleting a lot closure now also deletes its corresponding .txt file from the database
Lot Closure	The lot closure report now honours the "List E,N (X,Y) Format" system toggle.