



---

# **MicroSurvey embeddedCAD 2021**

## Features and Benefits

25 June 2020

---

# Contents

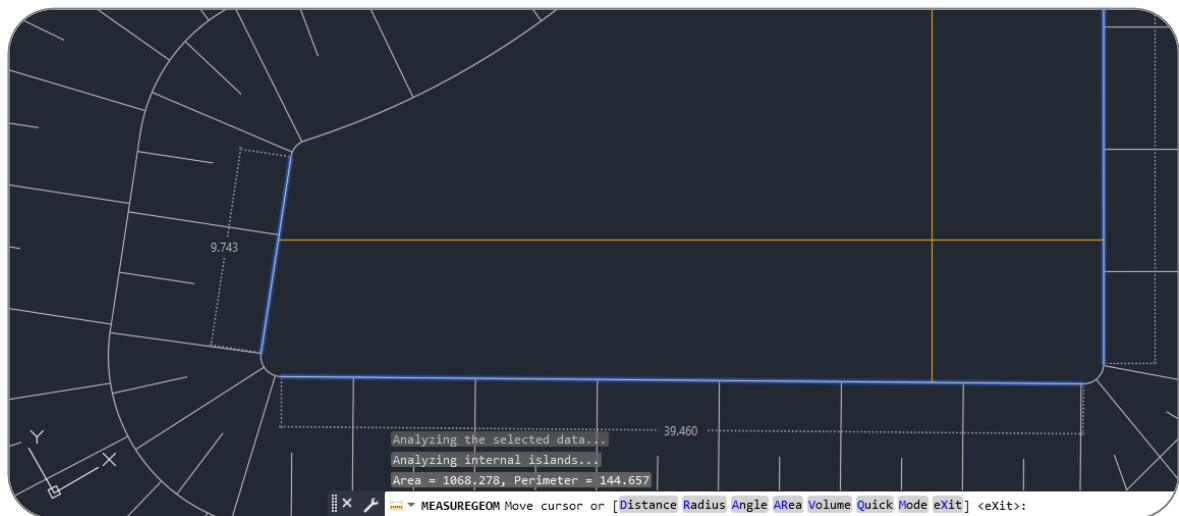
<b>MicroSurvey embeddedCAD 2021 .....</b>	<b>3</b>
New: AutoCAD OEM 2021 .....	3
New: Online License Activation .....	4
New: DBX Import Point Attributes.....	5
Enhanced: Symbol Librarian.....	6
Enhanced: FieldGenius SyncWizard .....	7
Enhanced: Bing Imagery .....	8

# MicroSurvey embeddedCAD 2021

Release Date: June 25, 2020

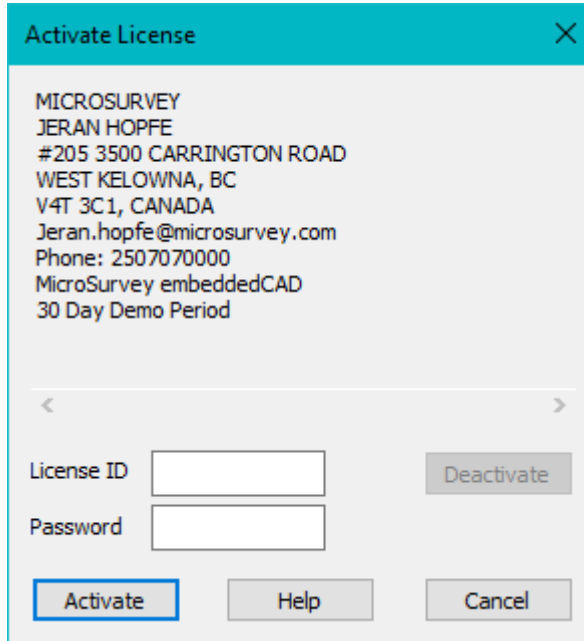
MicroSurvey embeddedCAD provides users with unencumbered survey drafting and calculation workflows, including COGO, point tools for gridline-based projects, traverse input and adjustment, misclosure reporting, common data collector support, 3D surface representation and computation, corridor design, and more. MicroSurvey embeddedCAD is perpetually licensed and is powered by AutoCAD®. With two available feature levels –Standard and Premium – MicroSurvey embeddedCAD allows users their choice of important features to get the tools and price point they need.

New: AutoCAD OEM 2021



Feature	Benefit
AutoCAD 2018 .dwg files	Open, edit, and save AutoCAD 2018 format .dwg files for maximum compatibility with AutoCAD 2018-2021 products.
XREF Compare	Visually compare versions of XREFs in your projects and examine differences or updates between them.
Trim/Extend	Trim and extend have been streamlined, now automatically selecting all objects as boundaries by default.
Break at Point	Break at Point is now a separate command and fully supported by the command entry "BREAKATPOINT"
Quick Measure	The MEASUREGEOM command now displays orthogonal measurements to nearby boundaries on mouse hover, and displays areas and perimeter of closed areas on mouse click.

## New: Online License Activation



**Activate License** [X]

MICROSURVEY  
 JERAN HOPFE  
 #205 3500 CARRINGTON ROAD  
 WEST KELOWNA, BC  
 V4T 3C1, CANADA  
 Jeran.hopfe@microsurvey.com  
 Phone: 250 7070000  
 MicroSurvey embeddedCAD  
 30 Day Demo Period

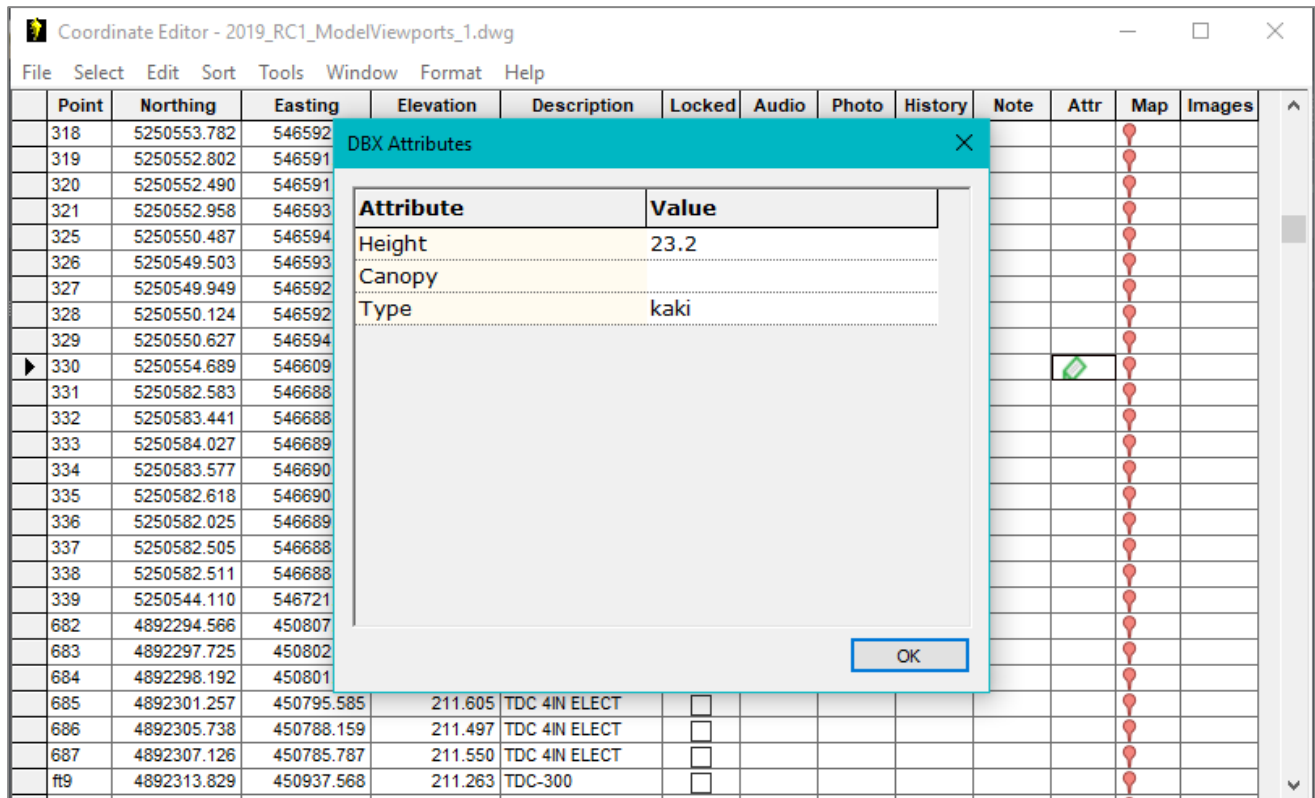
---

License ID

Password

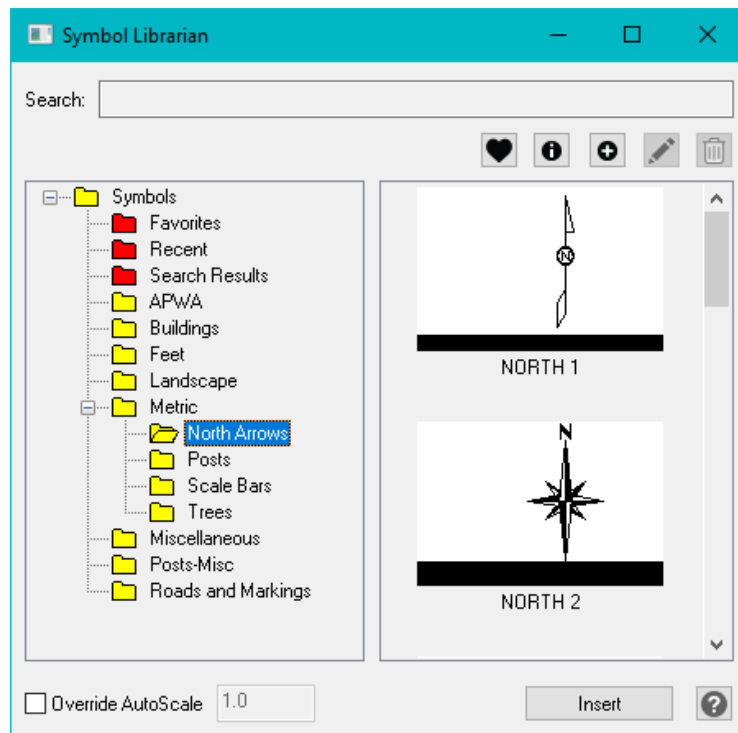
Feature	Benefit
Online License Activation	A new licensing system has been added to embeddedCAD, which provides more secure demo licensing and the ability to work without a USB key. USB keys will continue to work with embeddedCAD 2021, and will continue to be the primary method of licensing. In order to activate your demo license, you must visit <a href="http://microsurvey.com">microsurvey.com</a> and request a demo. Your sales representative will contact you to provide you with a License ID and Password to activate the program.

## New: DBX Import Point Attributes



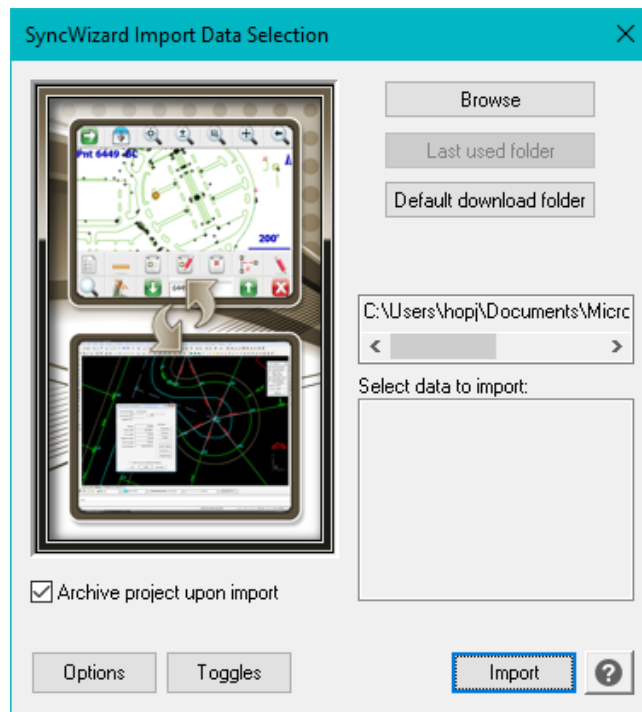
Feature	Benefit
DBX Import	Point attributes are now imported from Leica Viva/Captivate DBX projects via the DBXIN command.
Single Point Editor	A new attribute viewer has been added to the single point editor.
Active Coordinate Editor	A new attribute viewer has been added to the active coordinate editor.

Enhanced: Symbol Librarian



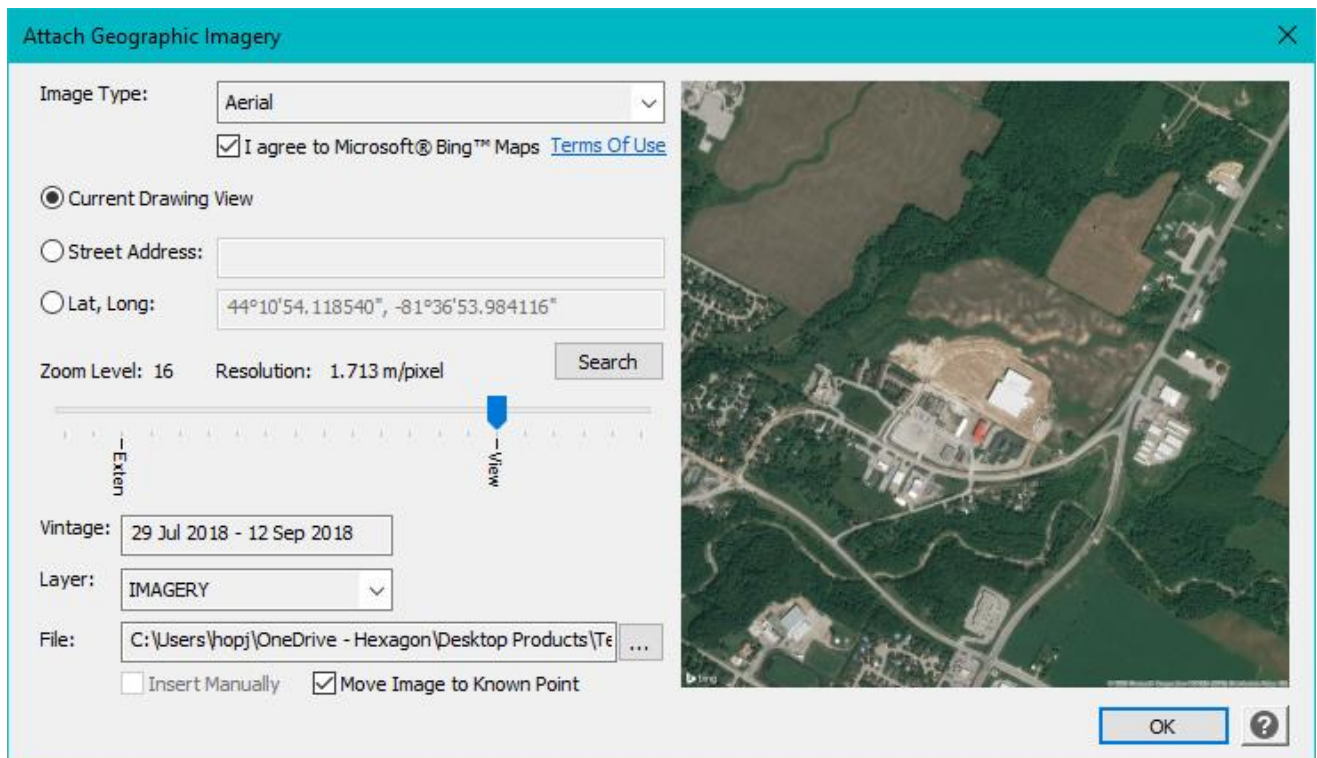
Feature	Benefit
Symbol Librarian	The symbol librarian (INSYM) dialog has been redesigned and streamlined with a more modern appearance

Enhanced: FieldGenius SyncWizard



Feature	Benefit
SyncWizard	The FieldGenius Import (SYNCWIZARD) has been redesigned and streamlined with a more modern appearance and less required dialogs.

Enhanced: Bing Imagery



Feature	Benefit
DBX Import	The Bing Imagery (ATTACH_IMAGERY) has been redesigned and streamlined with a more modern appearance and less required dialogs.