



---

# **MicroSurvey inCAD 2021**

## Features and Benefits

21 December 2020

---

# Contents

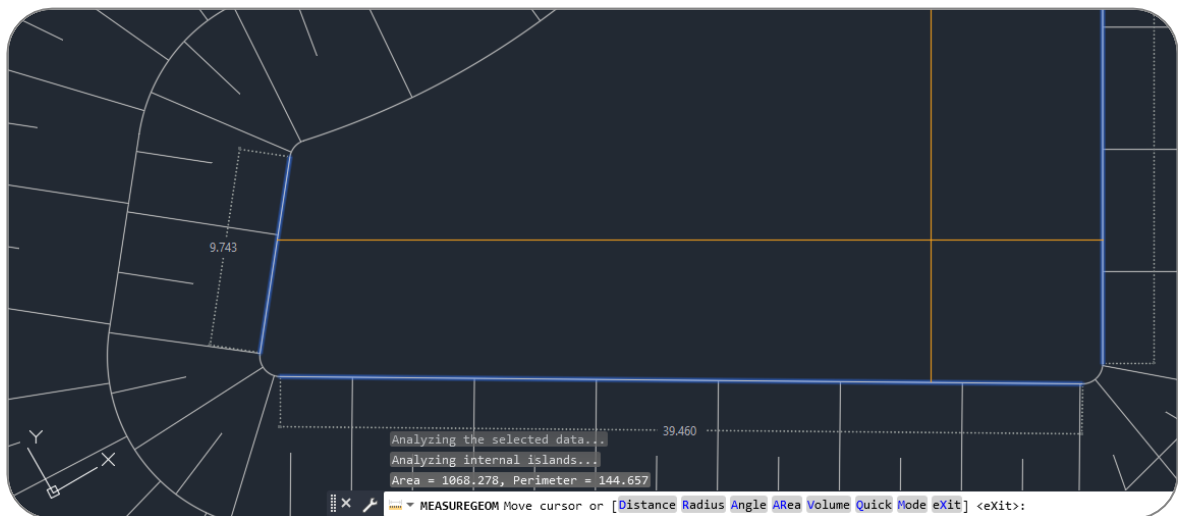
<b>MicroSurvey inCAD 2021 .....</b>	<b>3</b>
New: AutoCAD 2021 .....	3
New: Online License Activation .....	4
New: DBX Import Point Attributes .....	5
Enhanced: Symbol Librarian .....	6
Enhanced: FieldGenius SyncWizard .....	7
Enhanced: Bing Imagery .....	8
<b>MicroSurvey inCAD 2021 SP1 .....</b>	<b>9</b>
New: Shapefile Export .....	9
Enhanced: Auto Add Points to Objects .....	10

# MicroSurvey inCAD 2021

Release Date: June 25, 2020

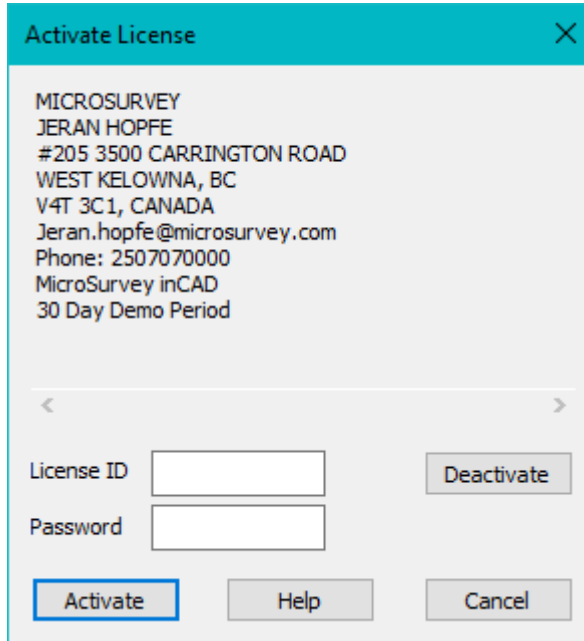
MicroSurvey inCAD provides users with unencumbered survey drafting and calculation workflows, including COGO, point tools for gridline-based projects, traverse input and adjustment, misclosure reporting, common data collector support, 3D surface representation and computation, corridor design, and more. MicroSurvey inCAD is perpetually licensed and is compatible with AutoCAD®, AutoCAD Map3D® and AutoCAD Civil 3D®. With two available feature levels –Standard and Premium – MicroSurvey inCAD allows users their choice of important features to get the tools and price point they need.

New: AutoCAD 2021



Feature	Benefit
AutoCAD 2018 .dwg files	Open, edit, and save AutoCAD 2018 format .dwg files for maximum compatibility with AutoCAD 2018-2021 products.
XREF Compare	Visually compare versions of XREFs in your projects and examine differences or updates between them.
Trim/Extend	Trim and extend have been streamlined, now automatically selecting all objects as boundaries by default.
Break at Point	Break at Point is now a separate command and fully supported by the command entry "BREAKATPOINT"
Quick Measure	The MEASUREGEOM command now displays orthogonal measurements to nearby boundaries on mouse hover, and displays areas and perimeter of closed areas on mouse click.
Drawing History	When used with cloud services, AutoCAD 2021 allows review of drawing history and edits.

## New: Online License Activation



**Activate License** [X]

MICROSURVEY  
 JERAN HOPFE  
 #205 3500 CARRINGTON ROAD  
 WEST KELOWNA, BC  
 V4T 3C1, CANADA  
 Jeran.hopfe@microsurvey.com  
 Phone: 250 707 0000  
 MicroSurvey inCAD  
 30 Day Demo Period

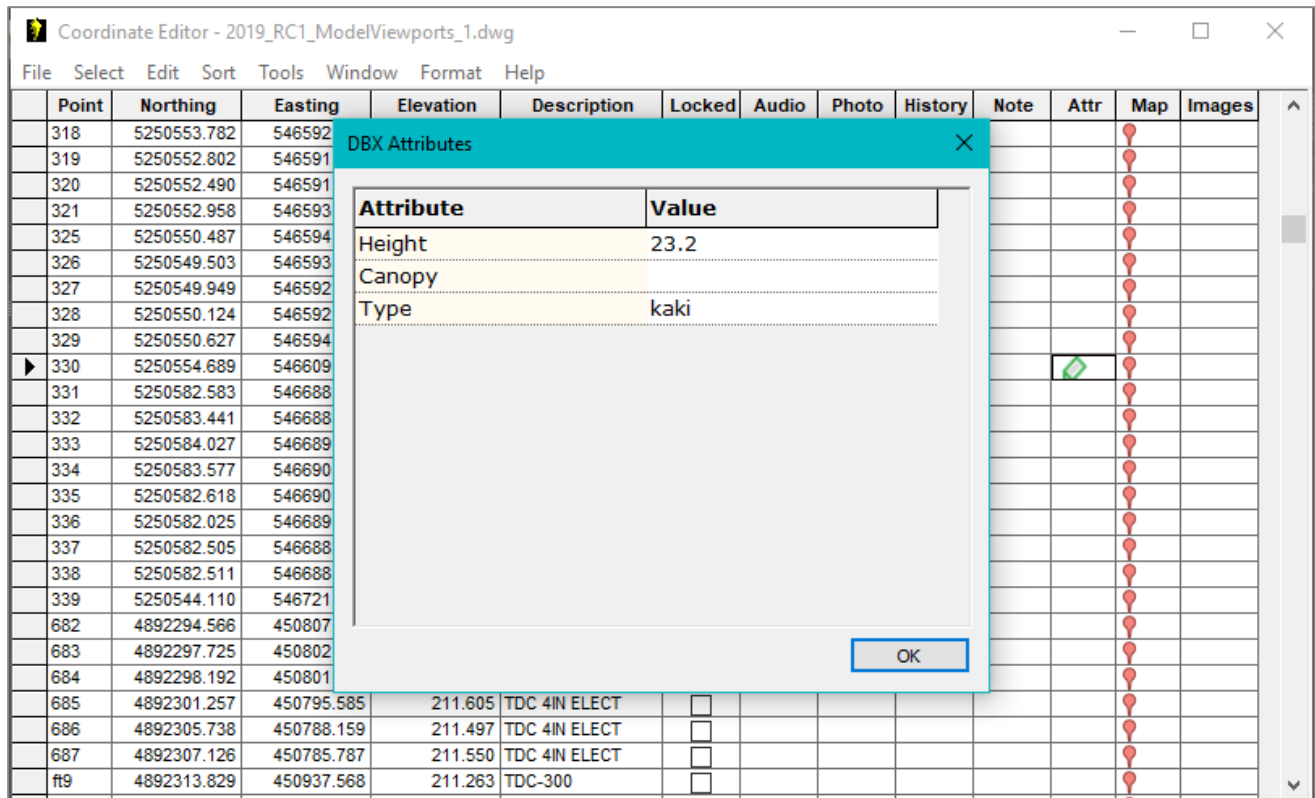
< >

License ID

Password

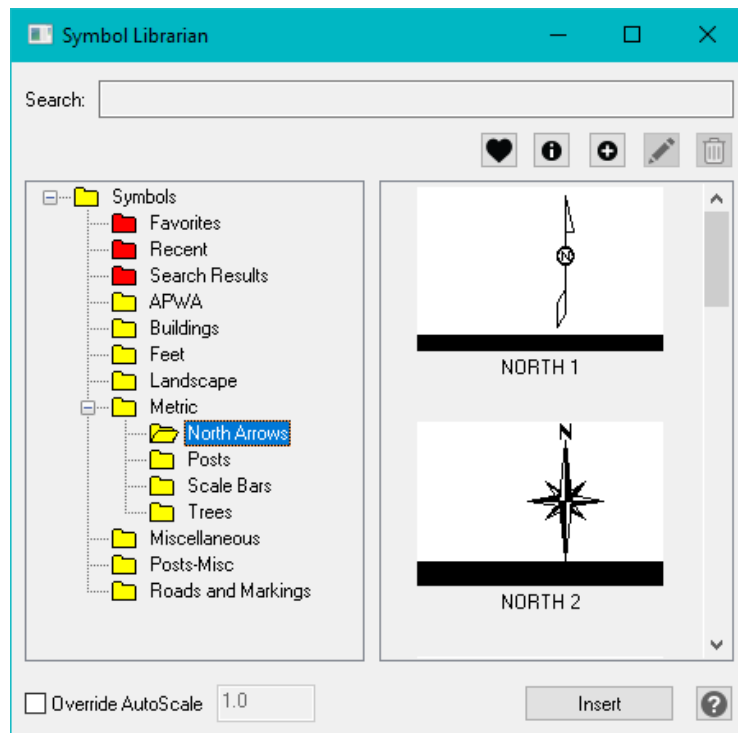
Feature	Benefit
Online License Activation	A new licensing system has been added to inCAD, which provides more secure demo licensing and the ability to work without a USB key. USB keys will continue to work with inCAD 2021, and will continue to be the primary method of licensing. In order to activate your demo license, you must visit <a href="http://microsurvey.com">microsurvey.com</a> and request a demo. Your sales representative will contact you to provide you with a License ID and Password to activate the program.

## New: DBX Import Point Attributes



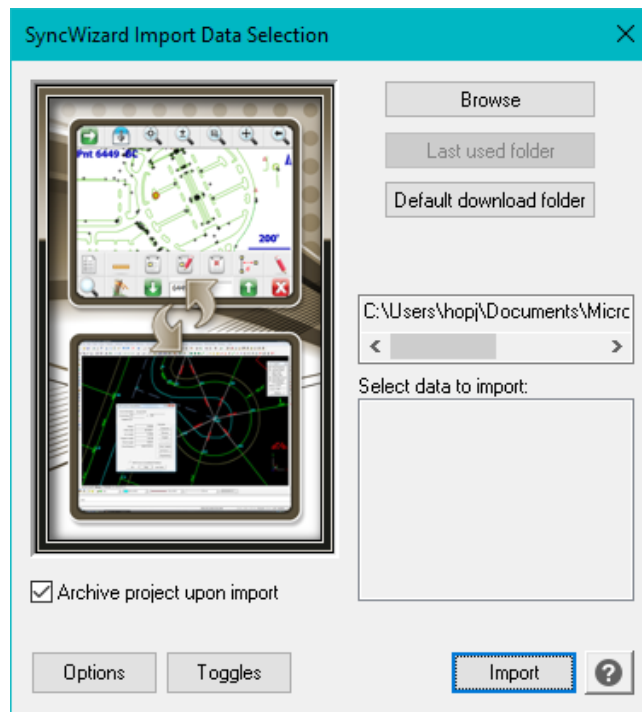
Feature	Benefit
DBX Import	Point attributes are now imported from Leica Viva/Captivate DBX projects via the DBXIN command.
Single Point Editor	A new attribute viewer has been added to the single point editor.
Active Coordinate Editor	A new attribute viewer has been added to the active coordinate editor.

Enhanced: Symbol Librarian



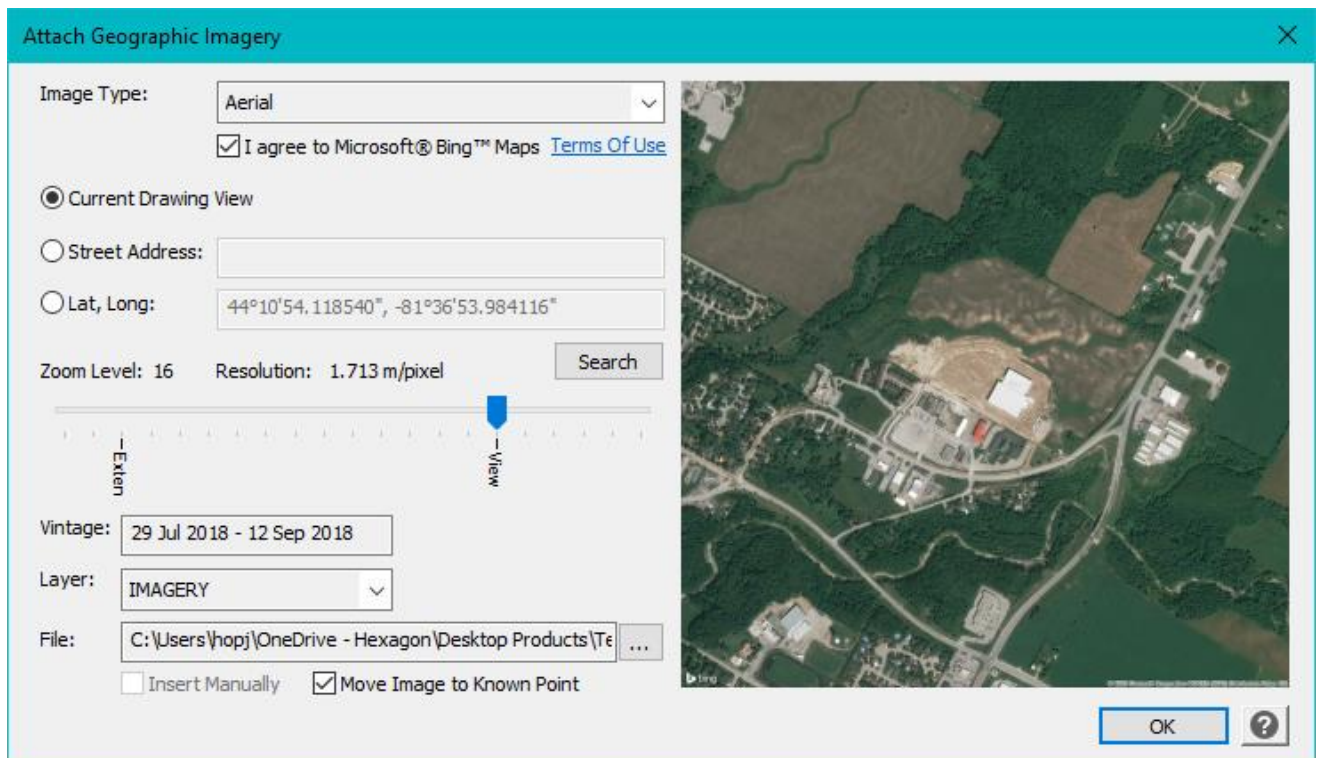
Feature	Benefit
Symbol Librarian	The symbol librarian (INSYM) dialog has been redesigned and streamlined with a more modern appearance

Enhanced: FieldGenius SyncWizard



Feature	Benefit
SyncWizard	The FieldGenius Import (SYNCWIZARD) has been redesigned and streamlined with a more modern appearance and less required dialogs.

Enhanced: Bing Imagery



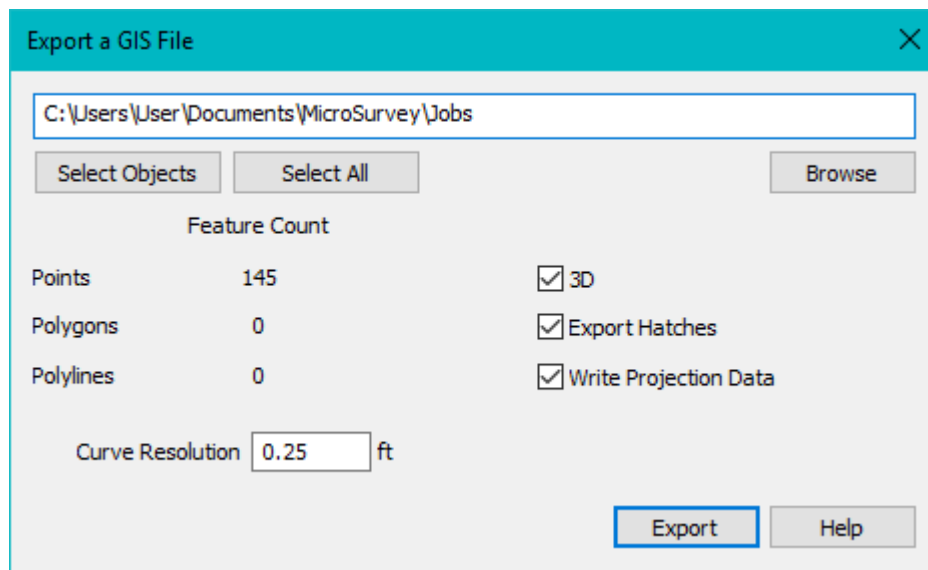
Feature	Benefit
DBX Import	The Bing Imagery (ATTACH_IMAGERY) has been redesigned and streamlined with a more modern appearance.



# MicroSurvey inCAD 2021 SP1

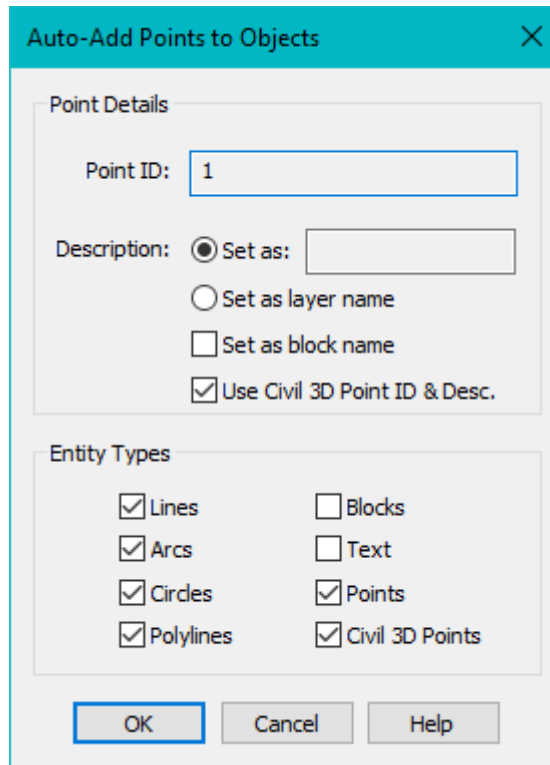
Release Date: December 22, 2020

## New: Shapefile Export



Feature	Benefit
Shapefile Export	When exporting, selected objects are automatically split into appropriate shapefiles in the designated export folder. Curves and circles have a set resolution to transform them to polylines and polygons. Shapefiles may be written as 2D or 3D. Hatches may be exported as polygons. .prj files may be created from the current project's coordinate system.
GIS Object and Attribute Export	GIS objects are exported, with some survey and CAD attributes added to the file, depending on object type.
Leica Captivate (DBX) Object and Attribute Export	Leica Captivate projects may be exported to shapefile, with all attributes collected from the field intact, and some survey and CAD attributes added, depending on object type.
FieldGenius Object and Attribute Export	MicroSurvey FieldGenius projects may be exported to shapefile, with all attributes collected from the field intact, and some survey and CAD attributes added, depending on object type.
CAD Object and Attribute Export	CAD objects may be exported to shapefile, with basic CAD and survey attributes added, depending on object type.

## Enhanced: Auto Add Points to Objects



Feature	Benefit
Civil 3D COGO Point Support	Quickly add MicroSurvey smart points at the location of Civil 3D COGO points in a project.
Use COGO Point ID and Description	Use the Civil 3D COGO point ID and description to populate these fields on the new MicroSurvey smart point created at this location.