



MicroSurvey CAD 2021 SP2

Features and Benefits

5 July 2021

Contents

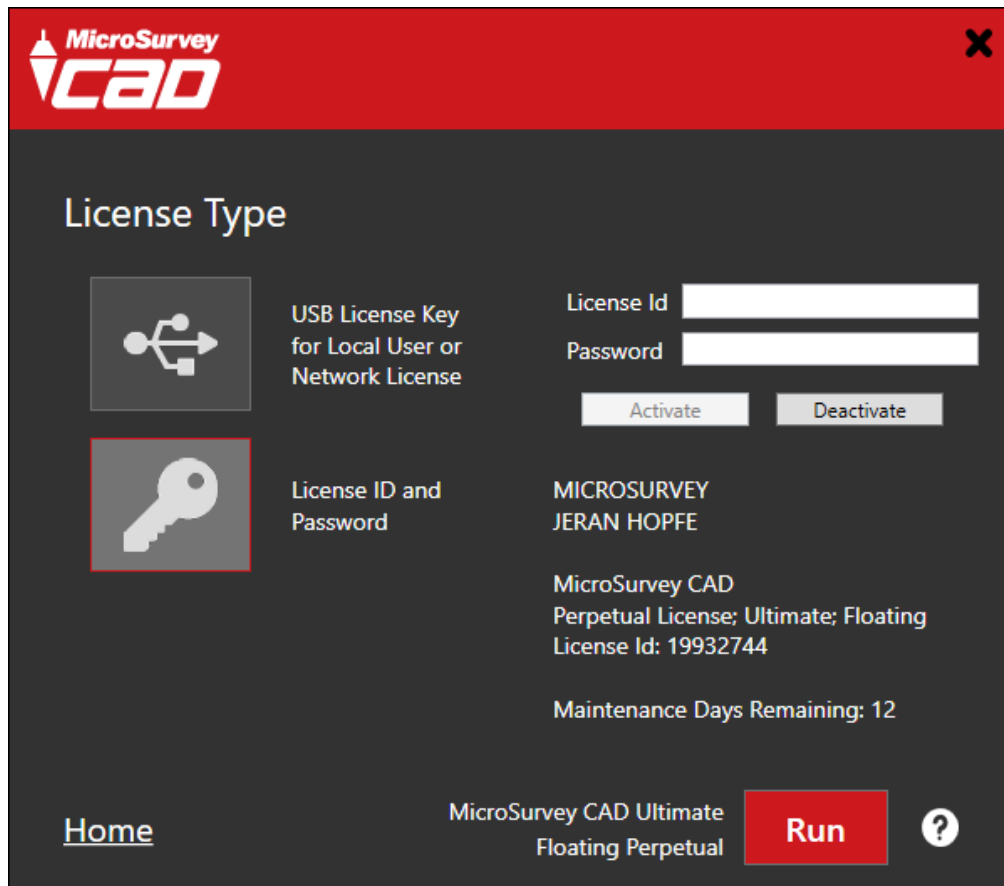
MicroSurvey CAD 2021 SP2	3
New: Floating Licenses.....	4
New: Custom Start Page	5
New: GIS Attribute Labels	6
Enhanced: GIS Attribute Filter	7
Enhanced: GIS Optimizations.....	8
Fixed: Surface Modeling	8
Fixed: AutoMap	8
Fixed: Annotation.....	8
Fixed: Active Coordinate Editor	8

MicroSurvey CAD 2021 SP2

Release Date: July 7, 2021

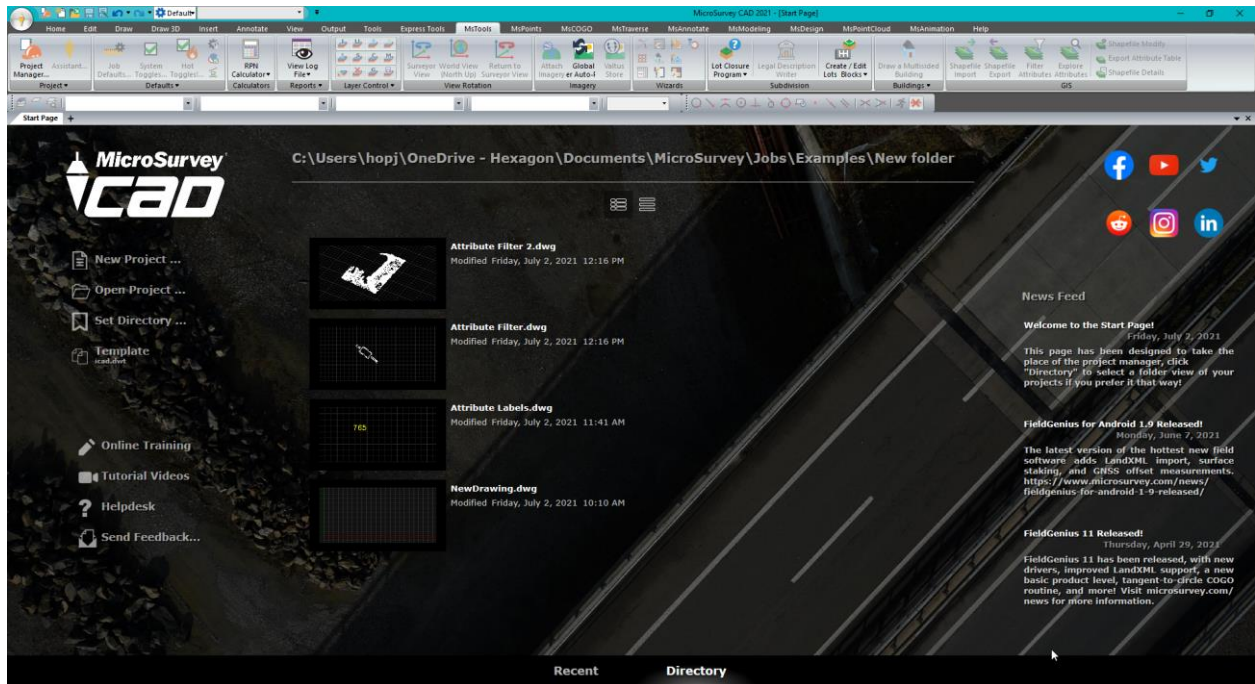
MicroSurvey CAD provides users with unencumbered survey drafting and calculation workflows, including COGO, point tools for gridline-based projects, traverse input and adjustment, misclosure reporting, common data collector support, 3D surface representation and computation, corridor design, point cloud management, and more. MicroSurvey CAD is perpetually licensed and is powered by IntelliCAD[®] which is compatible with AutoCAD[®] drawing files. With five available feature levels – Basic, Standard, Premium, Ultimate and Studio – MicroSurvey CAD gives users the choice between several tiers of features to ensure they are getting precisely the tools and price point they need.

New: Floating Licenses



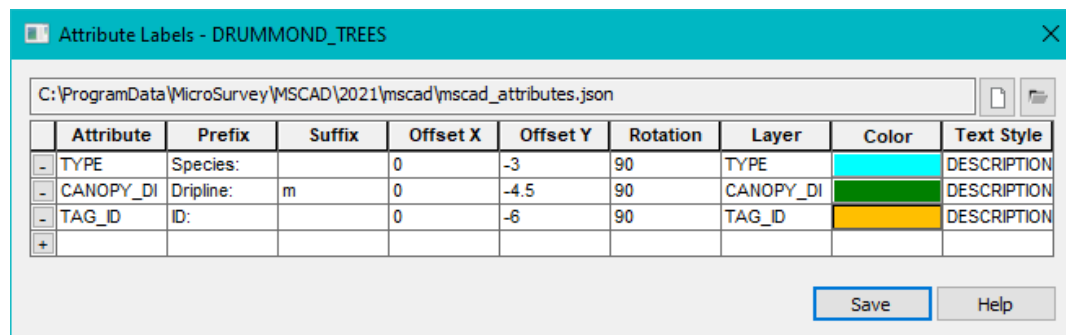
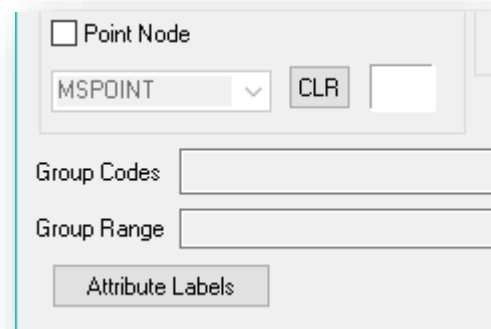
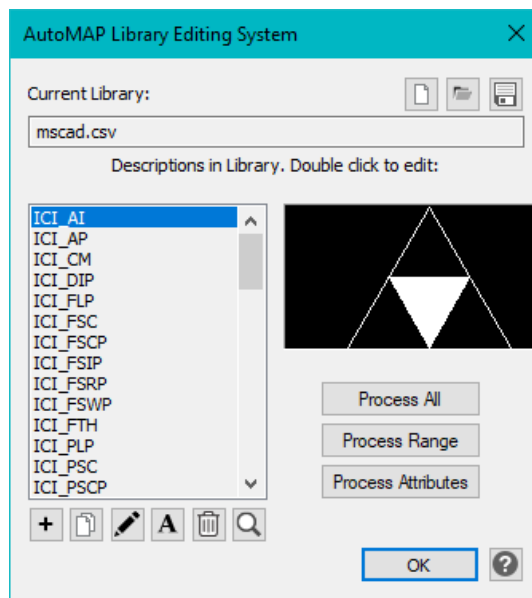
Feature	Benefit
Floating licenses	Run MicroSurvey CAD without using a USB key. Floating licenses allow users to access perpetual licenses of MicroSurvey CAD from any workstation that has had the floating license activated on it. License seats are consumed by running the program and returned when the program is closed.

New: Custom Start Page



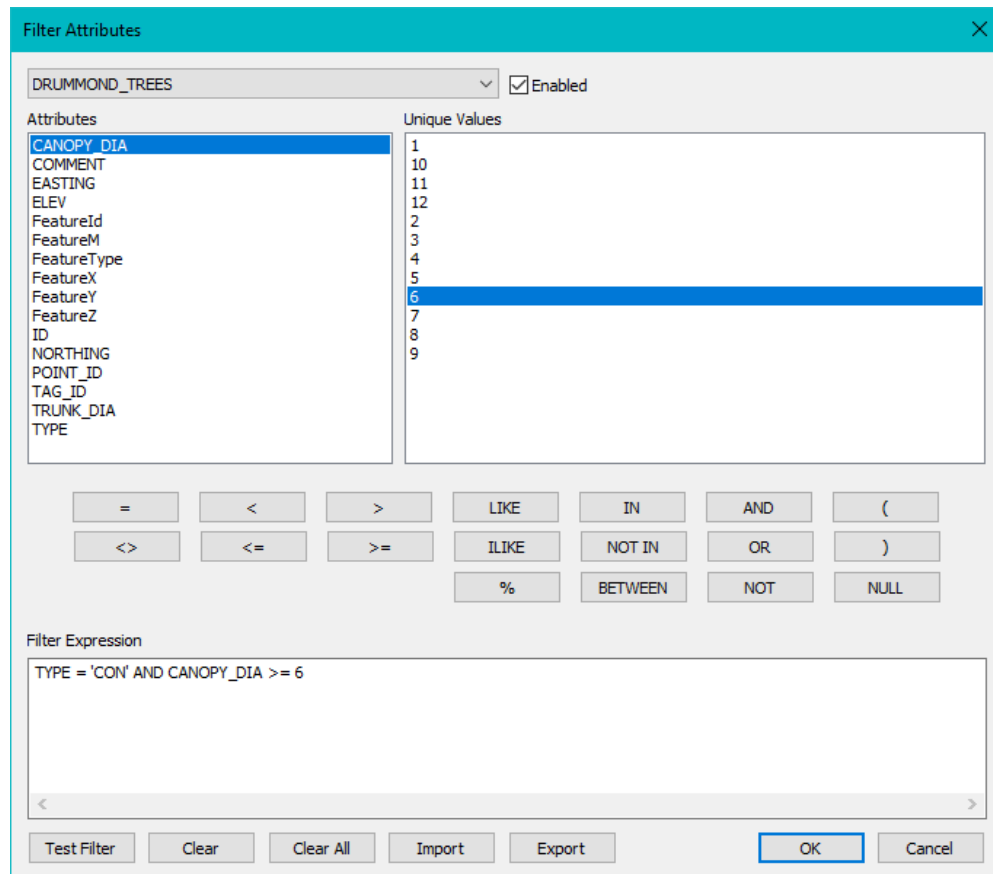
Feature	Benefit
Custom start page	Users can now create proper MicroSurvey projects, set working folders, set templates, view news, and access social media pages, online training, tutorial videos, and the helpdesk from the start page.

New: GIS Attribute Labels



Feature	Benefit
AutoMap Library	The AutoMap library has had a new “process attributes” button added. Clicking this button will apply any defined Attribute Labels to smart points in the project.
AutoMap Editor	The AutoMap editor dialog has had a new “Attribute Labels” button added. Clicking this button will open the Attribute Labels dialog to edit or define attribute labels for the current AutoMap entry.
Attribute Labels dialog	The Attribute Labels dialog will allow users to define additional point descriptor labels, locations, prefixes, suffixes, layers, colors, and text styles for any GIS attribute definitions detected in the project. Users may export the attribute labels definitions for distribution between colleagues, computers, etc.

Enhanced: GIS Attribute Filter



Feature	Benefit
ATTR_FILTER	The attribute filter has been made available directly within the drawing. Use the ATTR_FILTER command to control display of GIS objects in your projects.
Attribute Filter	New functionality has been added to the filter, including the ability to sort by GIS layer, disable entire layers, clear filters, and export/import filters to an external file.
GISEXPORT	The filter has been added to the GISEXPORT dialog to further modify the selection set.

Enhanced: GIS Optimizations

Feature	Benefit
GISIMPORT	The GISIMPORT function has been optimized and performance has been enhanced.
GISEXPORT	The GISEXPORT function has been optimized and performance has been enhanced.
ATTR_TABLE	The ATTR_TABLE function has been optimized and performance has been enhanced.

Fixed: Surface Modeling

Feature	Benefit
SVOL	Surface volumes were reported incorrectly at high coordinate values
ISLOPE	Intersecting a slope from an object to a surface at high coordinate values would not work.

Fixed: AutoMap

Feature	Benefit
AUTOMAP_EDITOR	Previews of AutoMap entries were not shown when clicked.
Polyline Width	Polyline width was not retained properly when using an existing AutoMap. Decimal places were truncated and only integers were used.

Fixed: Annotation

Feature	Benefit
On-Curve Arc Labels	Arc labels were incorrect when the arc was trimmed by an AutoMap symbol. The trimmed arc's dimensions were labelled, rather than the true arc dimensions.

Fixed: Active Coordinate Editor

Feature	Benefit
Active Coordinate Editor	Deleting points, then closing the editor while point protection was active would crash the program.