



---

# **MicroSurvey embeddedCAD 2022**

## Features and Benefits

29 June 2021

---

# Contents

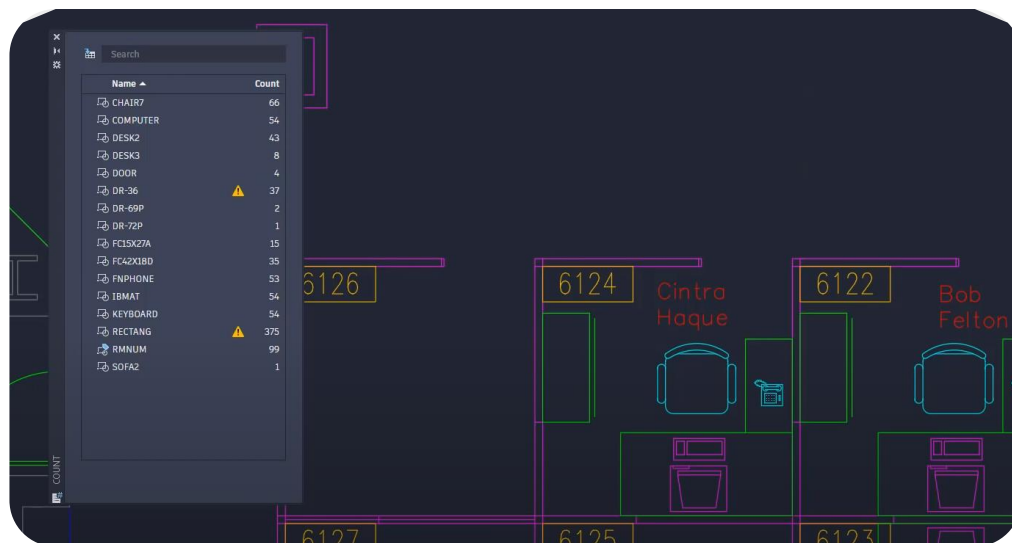
<b>MicroSurvey embeddedCAD 2022 .....</b>	<b>3</b>
New: AutoCAD 2022 .....	3
Enhanced: GIS Attribute Filter .....	4
New: GIS Attribute Labels .....	5
Enhanced: GIS Optimizations .....	6

# MicroSurvey embeddedCAD 2022

Release Date: July 8, 2021

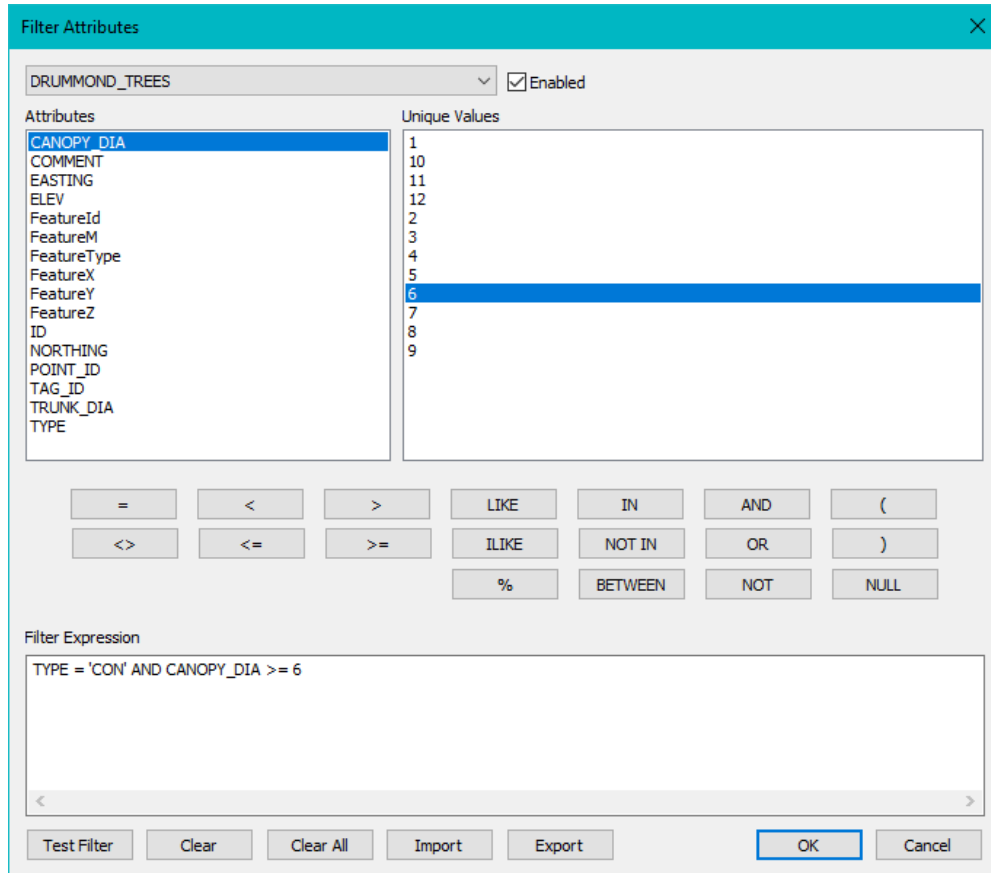
MicroSurvey embeddedCAD provides users with unencumbered survey drafting and calculation workflows, including COGO, point tools for gridline-based projects, traverse input and adjustment, misclosure reporting, common data collector support, 3D surface representation and computation, corridor design, and more. MicroSurvey embeddedCAD runs on the new AutoCAD® OEM 2022 engine.

New: AutoCAD 2022



Feature	Benefit
AutoCAD 2018 .dwg files	Open, edit, and save AutoCAD 2018 format .dwg files for maximum compatibility with AutoCAD 2018-2022 products.
Floating windows	Drag window tabs out from the main drawing window and back again to dock them.
Block Count	Use the COUNT command to automate counting blocks or geometry, insert fields or tables containing the number of objects into the drawing, and detect overlapping objects.
Performance	Performance enhanced for plotting and 3D graphics.

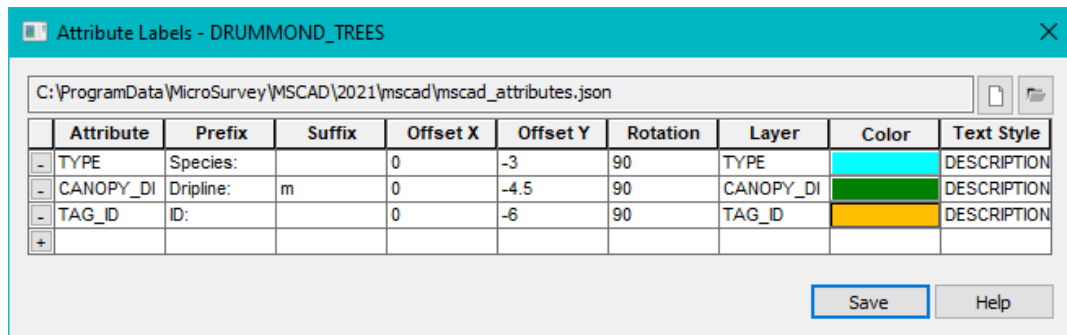
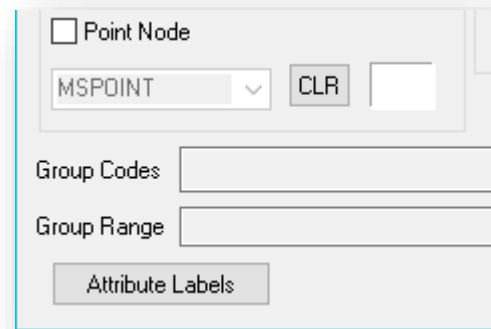
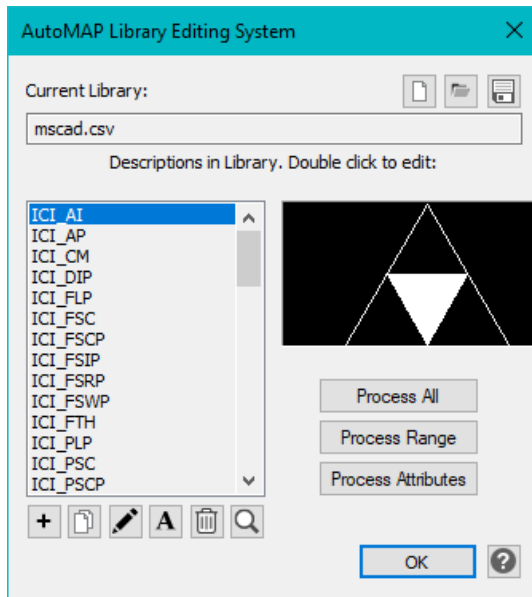
## Enhanced: GIS Attribute Filter



The screenshot shows the 'Filter Attributes' dialog box. At the top, the layer name 'DRUMMOND\_TREES' is selected, and the 'Enabled' checkbox is checked. Below this, there are two columns: 'Attributes' and 'Unique Values'. The 'Attributes' column lists various fields, with 'CANOPY\_DIA' selected. The 'Unique Values' column lists numerical values from 1 to 12, with '6' selected. Below these columns is a set of comparison operators: '=', '<', '>', 'LIKE', 'IN', 'AND', '(', '<>', '<=', '>=', 'ILIKE', 'NOT IN', 'OR', ')', '%', 'BETWEEN', 'NOT', and 'NULL'. The 'Filter Expression' field contains the text: 'TYPE = 'CON' AND CANOPY\_DIA >= 6'. At the bottom, there are buttons for 'Test Filter', 'Clear', 'Clear All', 'Import', 'Export', 'OK', and 'Cancel'.

Feature	Benefit
ATTR_FILTER	The attribute filter has been made available directly within the drawing. Use the ATTR_FILTER command to control display of GIS objects in your projects.
Attribute Filter	New functionality has been added to the filter, including the ability to sort by GIS layer, disable entire layers, clear filters, and export/import filters to an external file.

## New: GIS Attribute Labels



Feature	Benefit
AutoMap Library	The AutoMap library has had a new “process attributes” button added. Clicking this button will apply any defined Attribute Labels to smart points in the project.
AutoMap Editor	The AutoMap editor dialog has had a new “Attribute Labels” button added. Clicking this button will open the Attribute Labels dialog to edit or define attribute labels for the current AutoMap entry.
Attribute Labels dialog	The Attribute Labels dialog will allow users to define additional point descriptor labels, locations, prefixes, suffixes, layers, colors, and text styles for any GIS attribute definitions detected in the project. Users may export the attribute labels definitions for distribution between colleagues, computers, etc.

## Enhanced: GIS Optimizations

Feature	Benefit
GISIMPORT	The GISIMPORT function has been optimized and performance has been enhanced.
GISEXPORT	The GISEXPORT function has been optimized and performance has been enhanced.
ATTR_TABLE	The ATTR_TABLE function has been optimized and performance has been enhanced.