



MicroSurvey CAD 2022

Features and Benefits

20 December 2021

Contents

MicroSurvey CAD 2022	3
New: Floating License Checkout Protocols.....	4
New: IntelliCAD 10.1	5
New: Geolocation Tools.....	6
New: 3Dconnexion Device Support	7
New: Tables	8
New: Array Objects.....	9
New: Sheet Sets.....	10
New: CLONE	11
New: Dynamic Block Support	11
Fixed: Polyline Spline	11
Fixed: Graphics	11

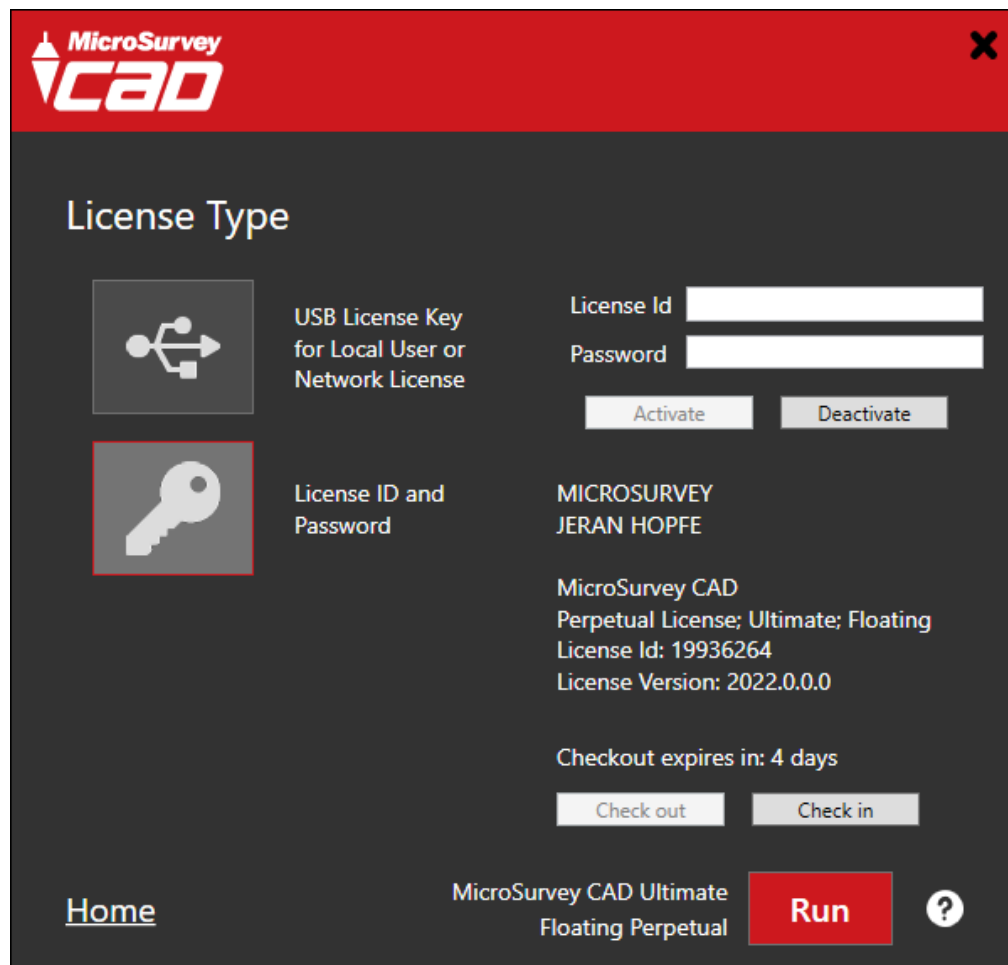
MicroSurvey CAD 2022

Release Date: December 22, 2021

MicroSurvey CAD 2022 includes an engine upgrade to the IntelliCAD 10.1 service pack, as well as the addition of checkout protocols for previously introduced floating licenses.

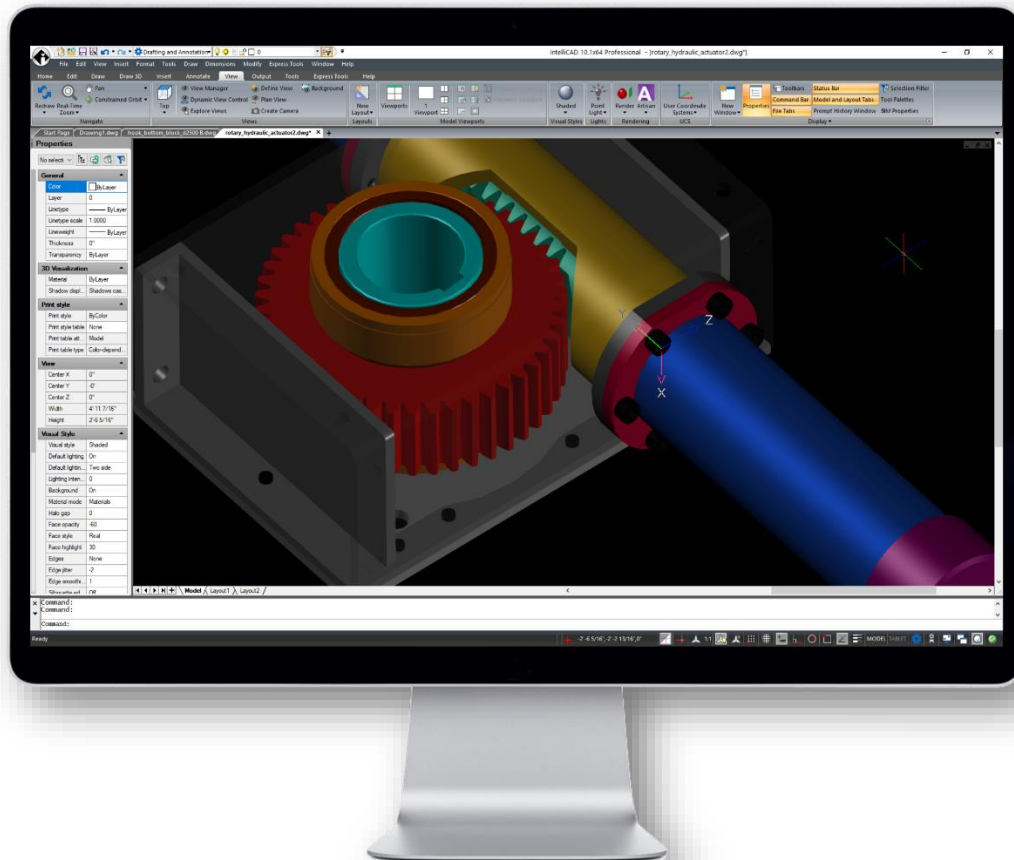
This release includes several high-priority fixes, streaming background imagery, 3Dconnexion device support, table and array objects, sheet sets, dynamic block support, a new CLONE command, and much more.

New: Floating License Checkout Protocols



Feature	Benefit
Check out floating license	Take your non-USB floating license offline by checking it out for up to four days. License seats are consumed for the entirety of the checkout period, ensuring you have access to a license offline or for important projects.
Check in floating license	Check in floating licenses any time within the checked out period. After the checkout period has expired, licenses will be automatically returned and the program will run in expired mode if offline. Licenses will automatically become available to other users with access to the floating license.

New: IntelliCAD 10.1



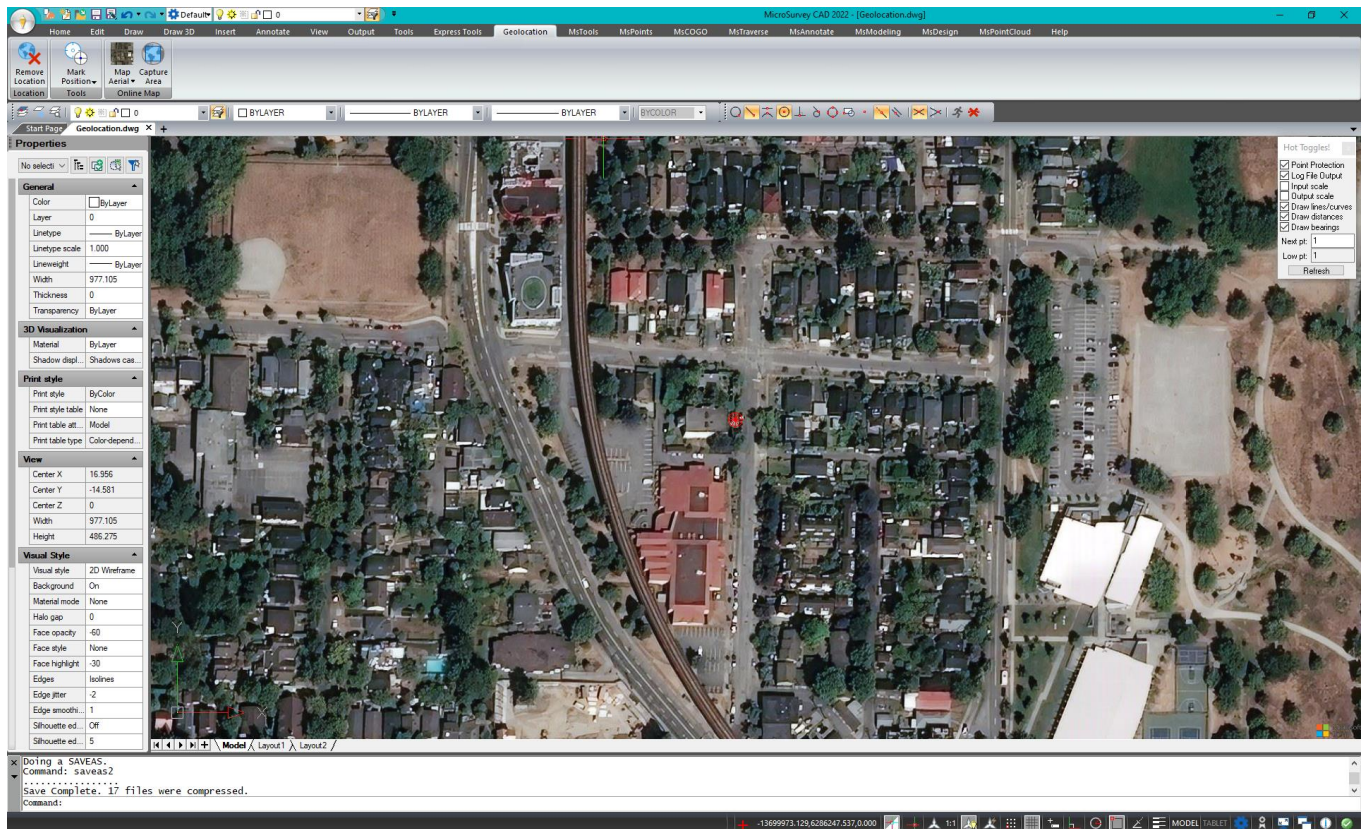
Feature

Benefit

Core Engine Upgrade

MicroSurvey CAD 2022 runs on IntelliCAD 10.1, which provides streaming background imagery, 3Dconnexion device support, table and array objects, sheet sets, dynamic block support, a new CLONE command, and more.

New: Geolocation Tools



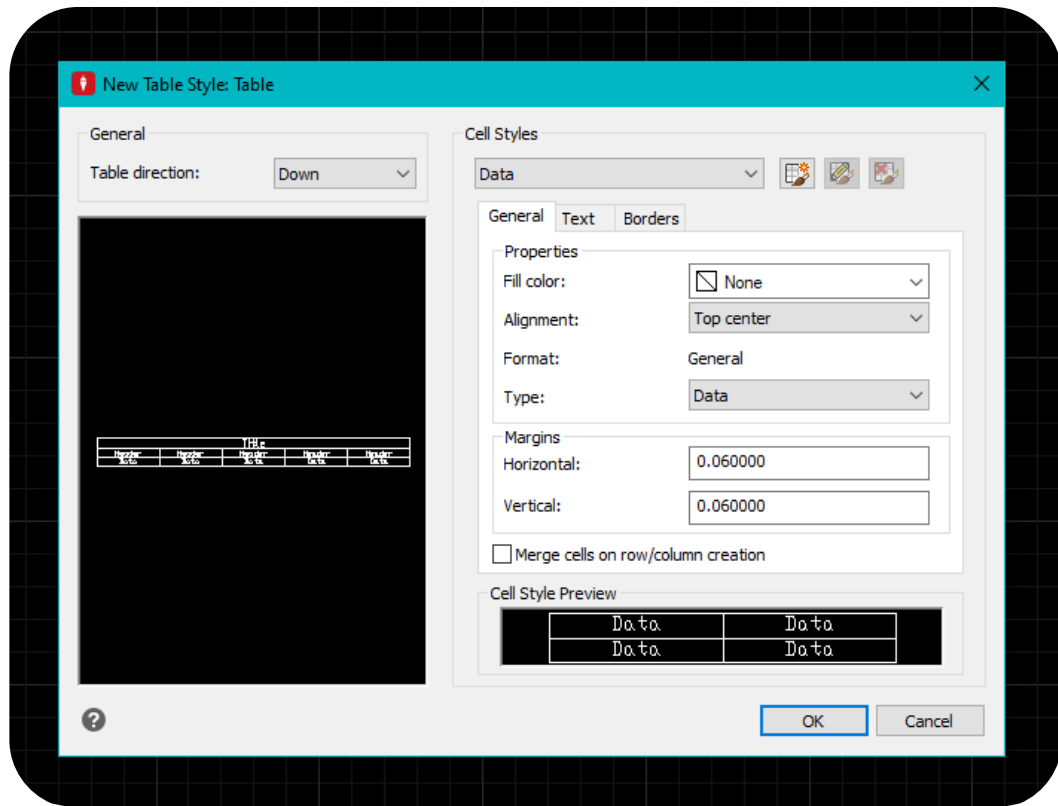
Feature	Benefit
GEO	The new GEO command will allow users to define their location within a project, then apply a coordinate system. Once these variables have been defined, users may apply streaming background imagery.
Streaming background imagery	Background imagery may be streamed via Bing, including satellite imagery, road mapping, or hybrid imagery.

New: 3Dconnexion Device Support



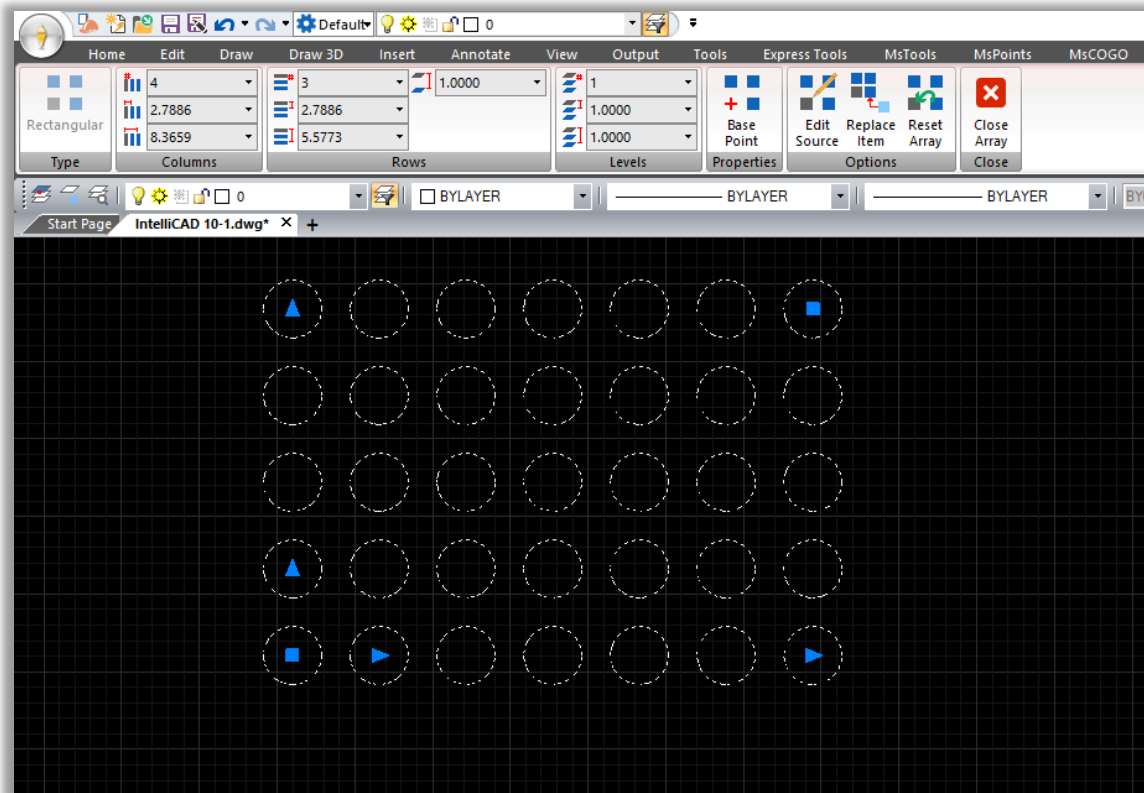
Feature	Benefit
3Dconnexion support	3Dconnexion manufactures several hardware devices, including the “SpaceMouse” which acts as a secondary mouse for your left hand that greatly improves manoeuvrability of three-dimensional space.

New: Tables



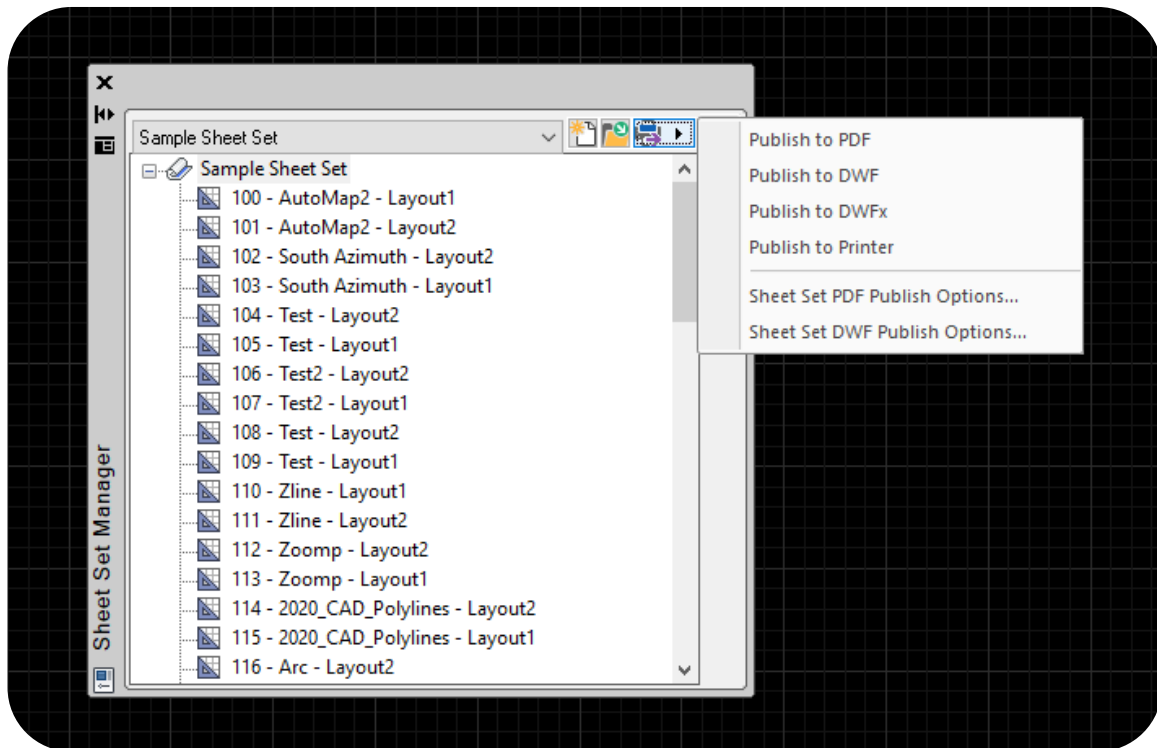
Feature	Benefit
TABLE	Users may define table styles and create table objects.

New: Array Objects



Feature	Benefit
ARRAY	Creating an array now creates an array object which may be modified with special grips or the ribbon.
EXPLODE	Array objects may be exploded to break apart into their individual entities.

New: Sheet Sets



Feature	Benefit
SHEETSET	Create and save sheet sets of layouts from a drawing, or multiple drawings, which may be plotted in a single action.

New: CLONE

Feature	Benefit
CLONE	<p>This new command will copy the properties of a selected object and begin the command to draw a brand new object with the same properties.</p> <p>This behaviour is similar to MATCHPROP, except it will begin the command to draw a new object, whereas MATCHPROP applies properties to an existing object.</p>

New: Dynamic Block Support

Feature	Benefit
Dynamic Blocks	Dynamic blocks created in another program, like AutoCAD®, are now supported.

Fixed: Polyline Spline

Feature	Benefit
POLYLINE	Splining a polyline would cause segments to be drawn to 0,0 in MicroSurvey CAD 2021. This is now fixed.
Smooth Contours (SMOO)	This defect would cause major issues with contour smoothing functionality, rendering it nearly useless. Now fixed.
GISEXPORT	Attempting to export a splined polyline would cause a crash.

Fixed: Graphics

Feature	Benefit
Drawing pane	In MicroSurvey CAD 2021, graphics issues would often appear, such as artifacts of layers which were frozen or turned off, or moved objects. This has been fixed.